

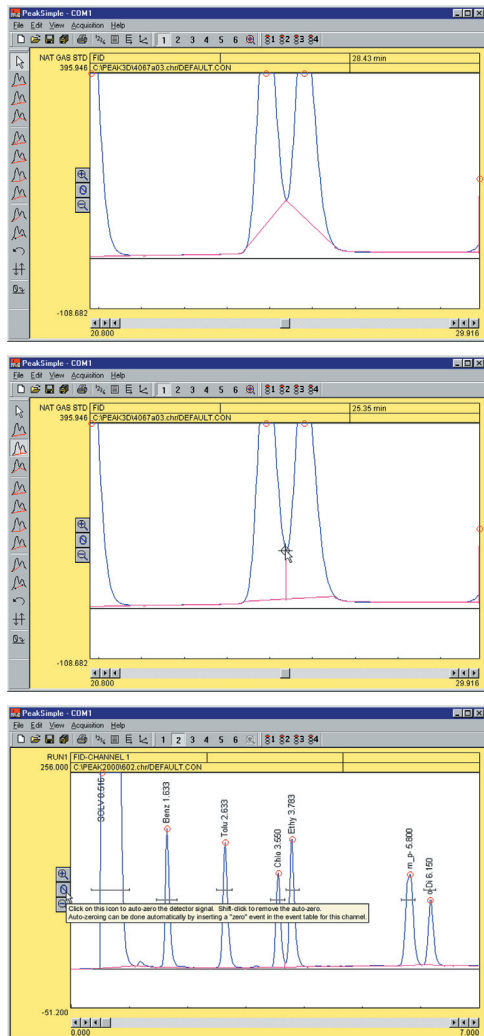
PeakSimple Data Systems

- With 1 or 6 Channels of Data Acquisition
- For any Windows™ Computer
- USB Port

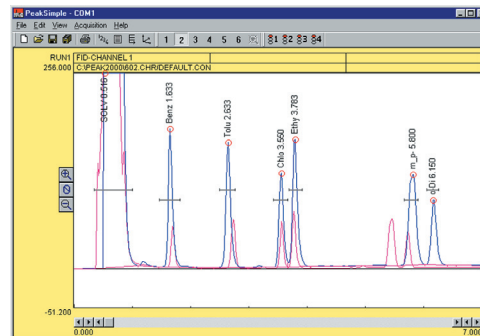
PeakSimple software has been continuously developed, refined and improved since 1988 by the same dedicated team of working chromatographers who use the software on a daily basis, and strive to simplify and enhance every aspect of PeakSimple so our customers will benefit. New features are added to PeakSimple several times per year and the latest version is always FREE to download online at www.chromtech.com, along with helpful tutorials.

Manually Reintegrate Your Chromatograms

Manual integration tools permit you to refine the integration method applied to any peak in your chromatogram. The toolbox is available at a click of the mouse. Baseline projection may also be "rubber-banded" from point to point for extremely selective or very broad reintegration using a single tool. The example below shows the use of the "Drop" tool to drop a vertical line from the valley of these two peaks to the baseline.



Most PeakSimple functions are launched from the chromatogram window, and are so user friendly that most operators can produce results almost immediately. ToolTips makes learning your way around PeakSimple even easier – just hold your mouse cursor over any icon or checkbox to read the onscreen How-To instructions.



Overlay Chromatograms

Overlay the data in any channel onto any other channel for retention time comparison or multi-detector correlation. The overlay adjust feature lets you stretch and shift overlaid data to facilitate pattern matching.

Click-and-Drag Retention Windows

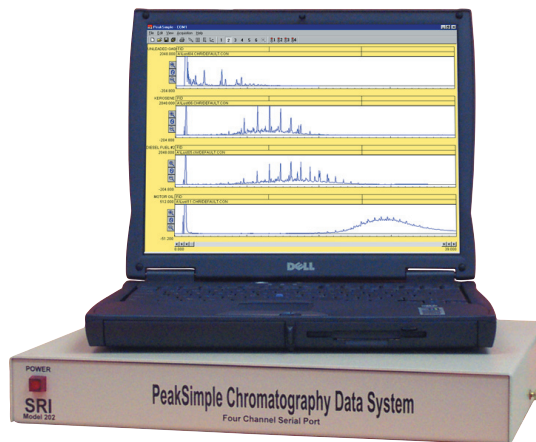
Retention window brackets are visible on-screen and may be grabbed, dragged onto a peak, widened or narrowed. The component table is automatically updated when a retention window is graphically moved or modified.

Baseline Subtraction and Data Smoothing

Blank baseline subtraction is useful to compensate for baseline drift due to column bleed and temperature ramping. PeakSimple lets you subtract baselines in real time as data is collected or post run. Noisy detector signals can be smoothed manually or automatically at the end of the run. Smoothing algorithms include Olympian, Moving Average, and Savitsky-Golay.

Create, Edit, Calibrate Component Tables

Create, save and edit component tables with an unlimited number of compounds. Enter expected retention times, control peak display, and more! Component details may be viewed and edited by double-clicking on any retention window in the chromatogram. Or, open the component table and double click on any component in the list to view or edit that component's details.

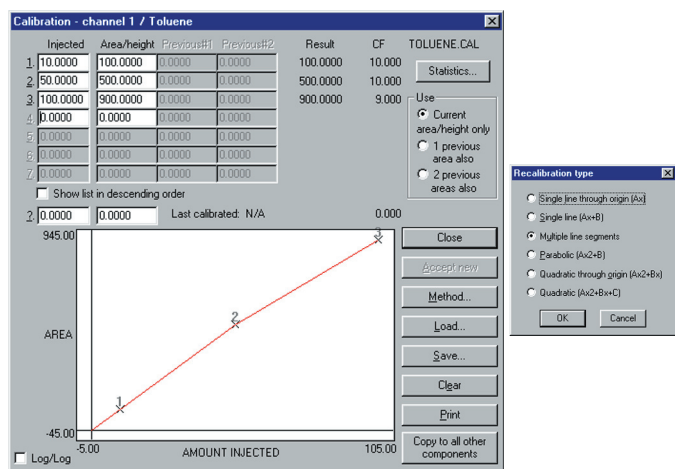


Chrom Tech, Inc.

"your chromatography specialists"

P.O. Box 240248, Apple Valley, MN 55124
 800/822-5242 in MN 952/431-6000 • 952/431-6345 fax
 email: sales@chromtech.com • www.chromtech.com

PeakSimple Data Systems

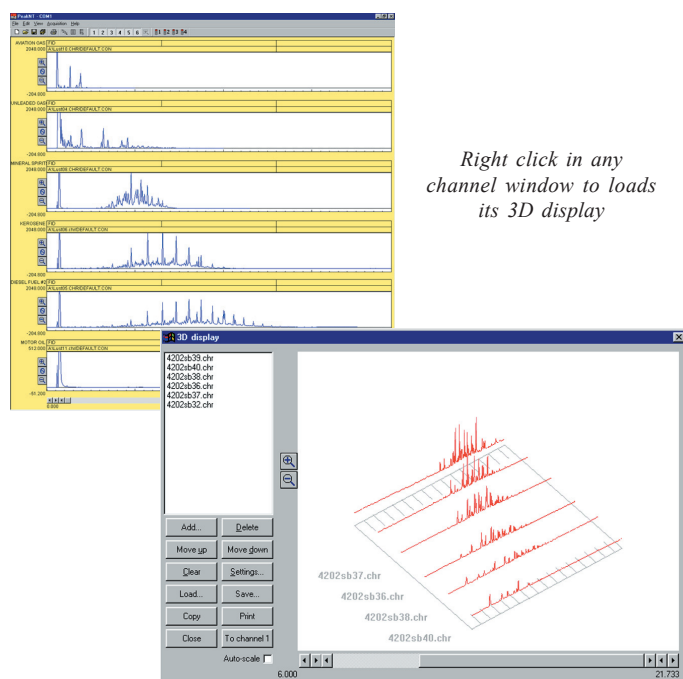


Multi-level Calibration Curves

Calibrate peaks seven ways (multi-line, quadratic, parabolic, etc.) using single or averaged data at up to seven concentration levels. Statistics for evaluating line fit quality, modification date audit trail, and curve printout insure defensible results.

Calibration Averaging

PeakSimple allows up to three replicate calibration standards at each of seven concentration levels to be averaged when constructing calibration curves.



Right click in any channel window to load its 3D display

3D Multiple Chromatogram Display

Right-click in any channel window to load its data into the 3D display feature. Click on the 3D icon to display multiple chromatogram traces in orthographic or perspective renditions, with auto-scaling and zoom. Add, delete, and arrange the displayed chromatograms using the buttons in the 3D display window.

The point of view may be placed anywhere on an imaginary sphere around the data, using the click-and-drag interface – almost like flying around the data in a helicopter. Grab the 3D display with your mouse and spin it around in realtime.

Autosampler Queue and Batch Reprocessing

Create customized autosampler sequences for liquid injections, purge and trap autosamplers, gas sampling valves, and stream selectors including unique predefined sample information, auto-calibration and batch reprocessing of previously run samples.

EPC & HPLC Gradient Programming

“Temperature,” “Pressure,” and “Gradient” channel control options all use the same simple dialog box, and each may be programmed with unlimited ramps and holds. Program one or two SRI GC column ovens from ambient to 400°C with 0.01 degree resolution and negative programming. Program the carrier gas pressure on SRI GCs equipped with electronic pressure control. Form binary HPLC gradients for low-cost pump control of any pump that takes a 0-1 volt analog signal. Manual/Automatic External Event Control

In addition to performing timed integration events, control up to eight external contact closure relay outputs to actuate sampling valves, autosamplers, solenoids, pumps, or any external device using TTL or relay contact closure triggers.

Dynamic Data Exchange (DDE) Built-in

Link PeakSimple results to your DDE-compatible spreadsheet or word processor (Excel, Word, 123, etc.). Analytical results are automatically transferred after every run, or can be accumulated within PeakSimple and copied as a block of data.

Merge Results from Multiple Channels

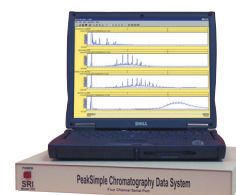
PeakSimple lets you merge the results from any channel or all channels into one report. This is handy when combining results from different detectors into single report for export to Excel or other data analysis programs.

Self-Validating Hardware

PeakSimple will play back and re-acquire any chromatogram multiple times establishing the precision and accuracy of the data system using real data not “canned” chromatograms. PeakSimple’s validation can be performed by the user anytime without extra hardware.

Print Multiple Chromatograms per Page

Print one, two, three, or four chromatograms side by side on one sheet of paper. When operating multiple detectors in series this makes data interpretation simpler. It also saves paper, time, and money.



PeakSimple Data System

Both models require analog input and connect to the USB port on your computer.

Cat. No.	Description
8600-1050	PeakSimple single channel data system
8600-6055	PeakSimple 6 channel USB data system (4 separate time bases, 4 remote start inputs)