

B2300 Binary Gradient System with Fixed Wavelength Detector

Performance Beyond its Price

Complete System Makes Setup Easy

The B2300 Binary Gradient System features a binary pump, UV detector and Clarity Software. For reproducible mixing, a static mixer forms part of the high-pressure binary gradient mixing kit. An injection valve with a 20 μ L loop, injector bracket, column holder, nuts, ferrules and tubing complete the system.

Software Operation

The B2300 is controlled by Clarity software. This software combined with a small PC allows for a fully featured data and control package with out the use of additional bench space.

The chromatography package includes:

- Clarity Software with complete manual
- A/D converter for analog data acquisition
- Control module for pump control

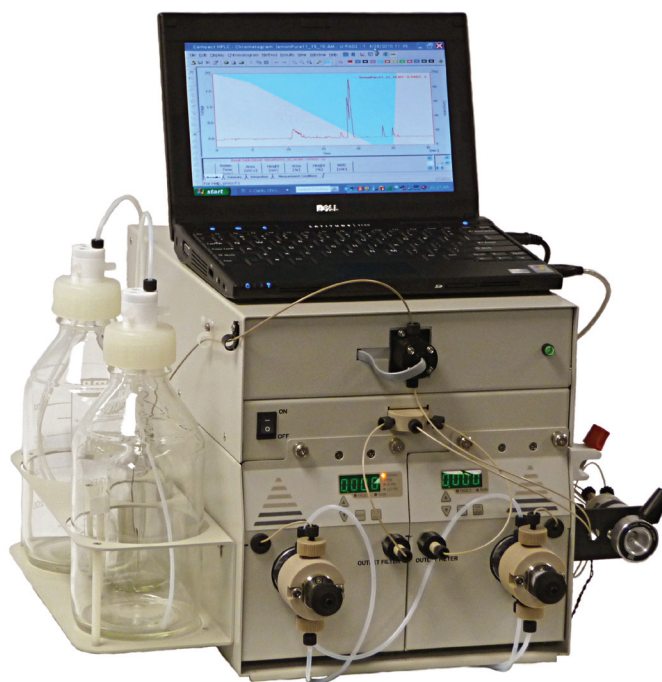
Clarity has additional modules available for virtually any application and method you may wish to perform. It can be upgraded to multi-systems and interface into a LIMS if required. Clarity is easy to use and is flexible in terms of controlled instruments (supports more than 250 instruments).

Clarity supports and meets CRF 21 11 requirements for applications requiring traceability.

Meets Performance Requirements

The B2300 pump features an advanced design rapid refill cam and a combination prime-purge valve/low volume diaphragm-type pulse damper, giving minimal baseline noise and low pulsation. Its flow rate of .001 – 5mL/min (6000 psi) is suitable for most analytical applications. A 10mL/min model is available for analytical and small scale prep.

The fixed wavelength 254 nm is a detector that gives high performance and minimizes noise. The 254nm wavelength has long been the most popular for general purpose chromatography. The simplicity of the detector guarantees long lamp life and ease of use.



New Easy Prime Heads

The B2300 pump's head design, with the prime purge valve integrated into each fluid path, ensures the solvent is drawn from the reservoir even if the other pump is running.

Reproducibility

The B2300 Pump gives reproducible gradients and chromatography due to its pulse-free, low-volume fluid path. The result is reproducibility that is seen in the chromatographic performance.

Low Cost Binary Gradient System

Cat. No.	Description
BGS-2305-254	System, SS, 5mL/min, 254nm
BGS-2305B-254	System, PEEK, 5mL/min, 254nm
BGS-2310-254	System, SS, 10mL/min, 254nm
BGS-2310B-254	System, PEEK, 10mL/min, 254nm

Chrom Tech, Inc.

“your chromatography specialists”

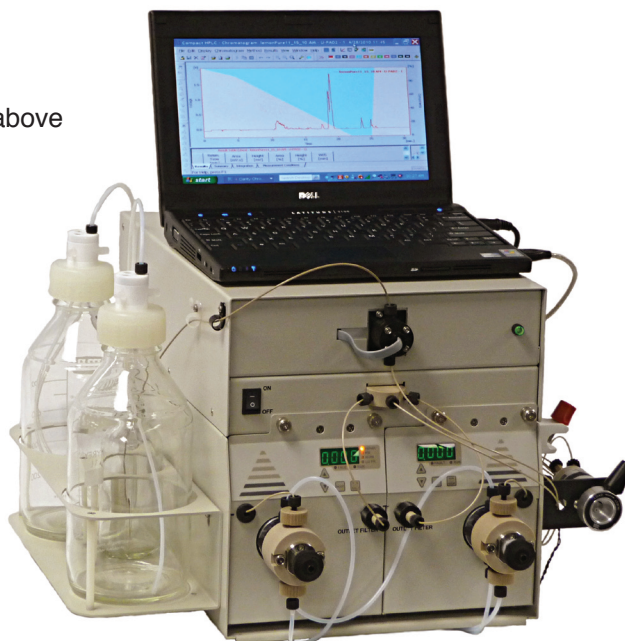
P.O. Box 240248, Apple Valley, MN 55124
 800/822-5242 in MN 952/431-6000 • 952/431-6345 fax
 email: sales@chromtech.com • www.chromtech.com

B2300 Binary Gradient System with Fixed Wavelength Detector

Performance Beyond its Price

Pump Specifications:

- Flow rates** .001–5.00mL/min
.01–10.00mL/min
- Pressure** 0 to 6,000 psi (SS heads)
0 to 5,000 psi (PEEK head)
- Pressure accuracy** $\pm 1\%$ of full-scale pressure
- Pressure zero offset** ± 2 psi
- Flow Accuracy** $\pm 2\%$ at flow rate of .2mL/min and above
- Flow Precision** 0.2% RSD
- Features** Prime-purge valve
Pulse damper
Self-flushing pump head
LED display
- Environmental** Indoor use only
- Altitude** 2000 M
- Temperature** 10 to 30 °C
- Humidity** 20 to 90% relative humidity
- Remote inputs** RS-232
- Power** Universal 90–260VAC, 50–60Hz



Detector Specifications:

- Wavelength:** 254nm
- Lamp:** Standard 6 " low pressure 254 Hg lamp
- Flowcell** Analytical. 7mm pathlength, 10mL volume, 200 psi;
wetted materials: PEEK or SS, quartz, Tefzel, TFE,
Teflon; 1/16" O.D. tubing.
- Linearity:** Better than 2%
- Stability (drift):** $< 2.5 \times 10^{-4}$ AU/Hr (at 254 nm, const. temp.)
- Noise:** $< \pm 2.5 \times 10^{-5}$ AU (5×10^{-5} AU peak to peak) at 254nm
and constant temperature)
- Recorder output (A):** 10mV
- Integrator output:** 1.0 V/AU
- Front panel controls:** Absorbance range selection scroll, autozero
- Rear panel controls:** Subminiature D-type, 15 position female connector for
detector recorder/ integrator output, and remote control
(Autozero, Lamp On/Off; Offset, Energy outputs)
- Power:** 110/115, 220/230V factory preset