

- Aminoglycoside Antibiotics
- Amino Acids
- Biogenic Amines
- Bromate
- Carbamate Pesticides
- Chromium VI
- Formaldehyde
- Glyphosate Herbicide
- Guanidinos
- Hexosamines
- Mycotoxins
- Paralytic Shellfish Toxins
- Paraquat & Diquat
- Polyphosphates/ Phosphonates
- Polyether Antibiotics
- Sulfa Drugs
- Transition/Rare Earth Metals
- Vitamins B1, B6
- Optional Windows PC Software Utility and more...

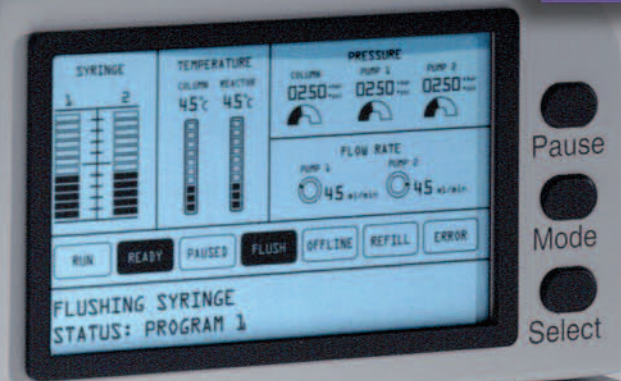
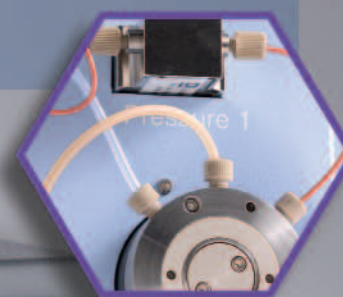
INTRODUCING THE ALL NEW

Pinnacle PCX*

Specifically Designed for Post-column Applications

New Features

- True Pulse-free Syringe Pump
- Completely Inert Flow-path
- Programmable Temperature Gradient
- User-friendly PC Control
- Worry-free Maintenance**
- Requires Less Reagents
- Works with All Brands of HPLC
- Automatic Piston Wash
- Fast Reactor Heating
- Quick-replace Cartridges for Reactor Coil



PICKERING
LABORATORIES



*Available 3rd quarter 2004
**Ask about our new Service Plans

SPECIFICATIONS

DIMENSIONS: 21.25" H x 10.5" W x 18.25" D

WEIGHT: 48 lbs

ELECTRICAL: 100-120V, 50/50 Hz, 1.7 A, 200 W or

200-240 V, 50/60 Hz, 0.8 A, 200 W

Mains voltage \pm 10% of nominal

Installation (over voltage) category II, pollution degree 2

ENVIRONMENTAL: Indoor use only. Altitude up to 6500 ft; Ambient

Temperature 5°- 40° C, Relative humidity up to 80% at 31°C.

Reagent Pumps

- True pulse-free syringe pump
- Single piece ceramic barrel
- Completely inert flow path
- Maximum operating pressure 500 psi
- Programmable flow-rate
- No-pulsation
- Flow range; 30 mL to 1500 mL/minute
- Refill cycle of 60 seconds
- Automatic piston wash
- Automatic reagent flush cycle
- No check valves

Reactor

- Heated reactor for temperature from 5° C above ambient to 130° C
- Easy replacement coil cartridges
- Range of reactor dwell volumes; 0.1 mL to 3mL
- Reaction coil withstands up to 42 bar (600 psi) inlet pressure at 130° C
- Thermal safety switch limits temperature to 150° C to prevent damage
- Fast response

Safeguards

- In-line check valve: Prevents reagent back flow into the column when HPLC pressure drops
- Replaceable column and reagent filters: Prevent reactor and column fouling
- Post-column system over pressure: A pre-calibrated relief valve opens at 35 bar (500 psi) to prevent rupture of the post-column reactor tubing in the event of down-stream blockage
- Back-pressure regulator: Applies 7 bar (100 psi) to the detector flow cell outlet (waste) to prevent detector noise and precipitation due to out-gassing or boiling

Column Heater and Reactor Controller

- Heater accepts 6 or 8 mm OD (0.25 or 0.31 inch) x 50-250 mm in length Column and guard
- Programmable Temperature gradient
- Temperature holds within \pm 1° C resolution from 5° C above ambient to 75° C
- Easy column access

Instrument Package and Flow path

- Advanced fluidics valve management system
- Easy access to internal components
- Standard fittings
- Post-column pressure relief valves
- Side panels easily remove for service
- Integrated Reagent reservoir tray
- Corrosion proof pan and panels



Access to all components of the PINNACLE PCX is from the front of the instrument. All substitutions and installations can be performed by the user.

Display

- Back light LCD
- Real time temperature and pressure display
- System Status icons
- Simple system control interface

Gas Pressure Manifold and Regulator

- Panel mount manifold
- Regulator maintains 0.3 bar (3-5 psi) on reagent reservoirs with 3-5 bar (45-75 psi) source pressure
- Safety Pressure-relief valve opens at 6 bar (8 psi)
- Manifold with anti-siphon valves has two 1/4-28 fittings

Pressurized Reagent Reservoir

- One liter capacity (2 and 5 L reservoirs available)
- Maintained under inert gas pressure to inhibit oxidation of oxygen-sensitive reagents
- Valve built into reservoir cap permits sparging during reagent preparation
- Reagent reservoirs fitted with 3.1 mm (1/8") OD (oxygen-impermeable) SARAN tubing for oxygen-sensitive reagents

Software System Requirements

- Windows 95 or higher, 2 MB hard drive space, Pentium processor
- RS-232 cable included
- Network enabled

•Distributed by Chrom Tech, Inc. • Apple Valley, MN • USA

800-822-5242 •952-431-6000 •952-431-6345 FAX • www.chromtech.com • sales@chromtech.com