

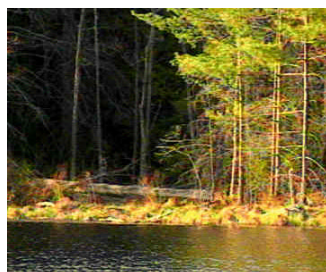


SENSIVATE

Post-Column Reactor

Sensitive Post-Column Derivatization at an Economical Price

The Chrom Tech Sensivate represents a new level in post-column performance, size, and cost. Based on proven pump technology combined with a unique reactor design and disposable heating blocks, you can now achieve post-column derivitization with great performance at an economical price. Either add Sensivate to your existing LC, or use a complete Chrom Tech HPLC-Post-Column system.



Sensivate Post-Column System

Applications:

- **Carbamates by OPA**
- **Glyphosates by OPA**
- **Aflatoxin by iodine**
- **Amino acids by OPA**
- **Amino acids by ninhydrin**

Chrom Tech, Inc.

“your chromatography specialists”

P.O. Box 240248, Apple Valley, MN 55124
800/822-5242 in MN 952/431-6000 • 952/431-6345 fax
email: sales@chromtech.com • www.chromtech.com



SENSIVATE

Post-Column Reactor

Sensivate for



Pesticides



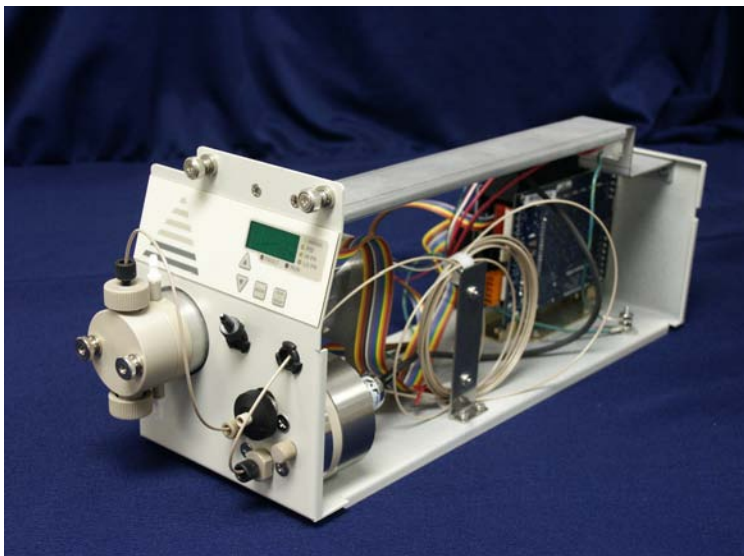
Aflatoxins



Herbicides

Features:

- Fast & easy setup:
 - One inlet connection (from column)
 - One outlet connection (to detector)
 - Modular:
 - 1 or 2 reactors (1 or 2 heated)
 - 1 or 2 pumps
 - Proven pump technology with self-flush to improve seal life
 - Pulse damper for reduced pulsation
 - Reduced number of connections minimizes leaks
 - All connections accessible from front panel
 - Front panel displays each reagent's flow, pressure, set, and actual temperature
 - Pump flow and reactor temperature settable from front panel or RS232
 - Upper/lower pressure and temperature limits, and system shutdown relay
 - Modular cartridge reactor, 2 fluid connections, and one hold-down to change volume or reactor
 - Disposable reactor cartridges
 - Reactor designed to reduce band broadening—not just a coil
 - All PEEK fluid path
-



Pump Specification:

Flow rate: 0.01 – 0.30 mL/minute (limited by firmware except when priming)

Pressure: 0-2500 psi (172 bar) (upper limit limited by firmware)

Flow Precision: < 0.5% RSD

Flow Accuracy: $\pm 2\%$ from set point

Materials: All-PEEK fluid path, including pump heads

Input: RS232 Interface for remote control and monitoring

Power: 120/230 Vac; 50/60 Hz

Features:

- Automatic piston wash (significantly improves seal life)
- Stepper motor drive, with electronic fast refill via flag and sensor
- Dual check valves (inlet & outlet) – ruby ball, sapphire seat
- Prime-Purge Valve (PEEK)
- Pulse Dampener (PEEK)
- Outlet Filter (0.5 m UHMW)
- Back Pressure Coil for proper Pulse Dampener operation (approx. 1000 psi @ 1.0 mL/min)
- Pressure Transducer (isolated in Pulse Dampener)
- Interactive front keypad with digital read-out:
 - Flow rate set points
 - Pressure readout
 - Set upper/lower pressure limit

Reactor Specification:

Volume accuracy: $\pm 5\%$

Temperature Operating Range: 10° C above ambient to 150° C

Temp. Accuracy: $\pm 2^\circ$ C over entire range (outlet fluid temperature vs. set point)

Temp. Repeatability: $\pm 1^\circ$ C.

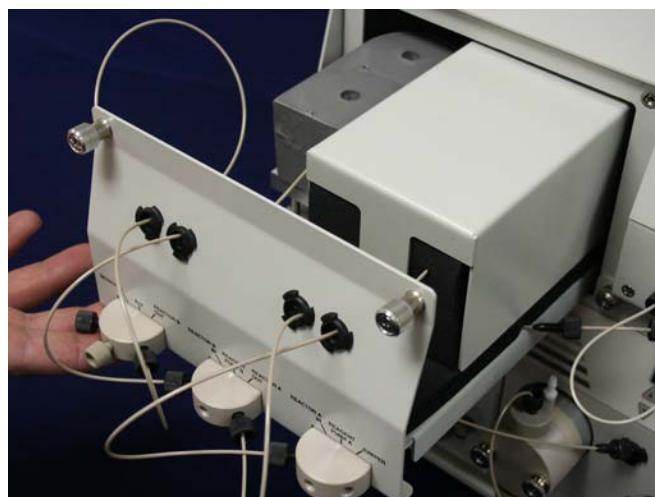
Safety Cutoff Temperature: 160° C

Stabilizing Time: 30 minutes to 150° C for "Ready" indication

Input: RS-232 Interface for remote control and status monitoring

Features:

- Continuous loop, fully sealed
- Multi-directional path for effective mixing
- Interactive front keypad control with digital read-out
 - Temperature set point
 - Temperature read-out ($^\circ$ C or $^\circ$ F)
 - Ready light



Reactor and pump modules are on slide-out drawers for easy replacement

The reactor module is available separately (see ordering information for details)





SENSIVATE

Post-Column Reactor

Ordering Information:

To configure part number, choose one number from columns 1 and 2. If second reactor is required, choose number from column 3. Examples: PCR1-R015; PCR2-R050-R050

Choose system

Choose heated reactor volume

Choose unheated reactor volume (if required)

| PCR System | Reactor Block 1 (heated) | Reactor Block 2 (ambient) |
|---|--|--|
| PCR0—Post Column Reactor Unit | R015 (0.15 mL Reactor) | R015 (0.15 mL Reactor) |
| PCR1—Single Reagent Post Column System (1 pump) | R050 (0.50 mL Reactor) | R050 (0.50 mL Reactor) |
| PCR2—Dual Reagent Post Column System (2 pumps) | R070 (0.70 mL Reactor) | R070 (0.70 mL Reactor) |
| | R140 (1.4 mL Reactor) | R140 (1.4 mL Reactor) |
| | RXXX (XXX = reactor size in mL) custom reactor size | RXXX (XXX = reactor size in mL) custom reactor size |

Optional:

160808

Sparging option assembly. Includes 1 reagent bottle rack, 2 multi-valve bottle lids, 1 pressure regulator, 1 over-pressure system shutdown box, mounting hardware, tubing, fittings, Bottle not included.

Chrom Tech, Inc.

“your chromatography specialists”

P.O. Box 240248, Apple Valley, MN 55124

800/822-5242 in MN 952/431-6000 • 952/431-6345 fax

email: sales@chromtech.com • www.chromtech.com