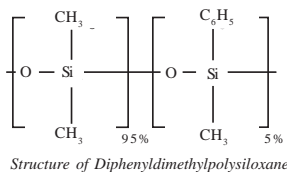


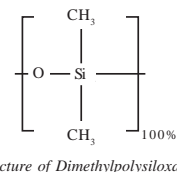
Agilent GC Capillary Columns



HP-5MS

- (5% Phenyl) - methylpolysiloxane
- Equivalent to USP Phase G27

ID(mm)	Length	Film	Iso/Prog	Cat. No.
0.20	12.5m	0.33µm	325/350	19091S-101
	25m	0.33µm	325/350	19091S-102
	50m	0.33µm	325/350	19091S-105
0.25	15m	0.10µm	325/350	19091S-331
	15m	0.25µm	325/350	19091S-431
	15m	1.00µm	325/350	19091S-231
	30m	0.10µm	325/350	19091S-333
	30m	0.25µm	325/350	19091S-433
	30m	0.50µm	325/350	19091S-133
	30m	1.00µm	325/350	19091S-233
	60m	0.10µm	325/350	19091S-336
	60m	0.25µm	325/350	19091S-436
	0.32	15m	0.10µm	325/350
15m		0.25µm	325/350	19091S-411
15m		1.00µm	325/350	19091S-211
25m		0.52µm	325/350	19091S-112
30m		0.10µm	325/350	19091S-313
30m		0.25µm	325/350	19091S-413
30m		0.50µm	325/350	19091S-113
30m		1.00µm	325/350	19091S-213
60m		0.10µm	325/350	19091S-316
60m		0.25µm	325/350	19091S-416



Ultra 1 and Ultra 2

- Ultra 1: 100% Dimethylpolysiloxane
- Ultra 2: (5% Phenyl) - methylpolysiloxane
- Intended for use with Sadtler Retention Index Library

Ultra 1

ID(mm)	Length	Film	Iso/Prog	Cat. No.
0.20	12.5m	0.33µm	325/350	19091A-101
	25m	0.11µm	325/350	19091A-002
	25m	0.33µm	325/350	19091A-102
	50m	0.11µm	325/350	19091A-005
	50m	0.33µm	325/350	19091A-105
0.32	25m	0.17µm	325/350	19091A-012
	25m	0.52µm	325/350	19091A-112
	50m	0.17µm	325/350	19091A-015
	50m	0.52µm	325/350	19091A-115

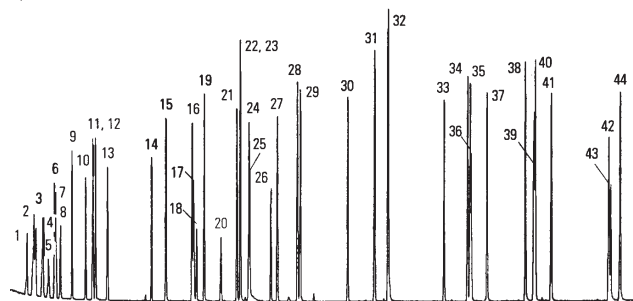
Ultra 2

0.20	12.5m	0.33µm	325/350	19091B-101
	25m	0.11µm	325/350	19091B-002
	25m	0.33µm	325/350	19091B-102
	50m	0.11µm	325/350	19091B-005
	50m	0.33µm	325/350	19091B-105
0.32	25m	0.17µm	325/350	19091B-012
	25m	0.52µm	325/350	19091B-112
	50m	0.17µm	325/350	19091B-015
	50m	0.52µm	325/350	19091B-115

Semivolatile Organics: EPA Method 625

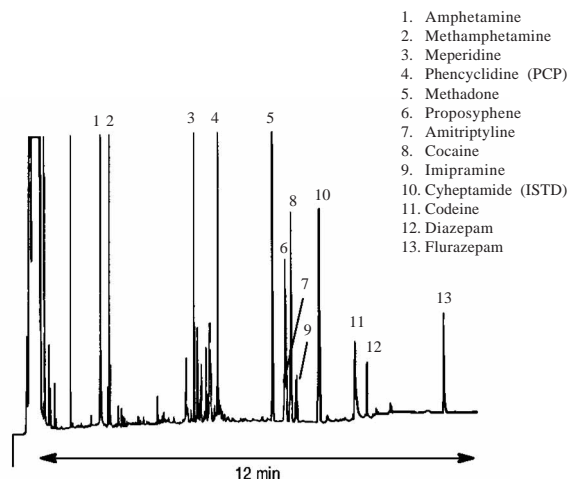
EPA Method 625

- | | | |
|----------------------------------|---------------------------------|----------------------------------|
| 1. Bis (2-chloroethyl) ether | 15. 2-Chloronaphthalene | 30. Di-n-butylphthalate |
| 2. Dichlorobenzene, 1,2- | 16. Acenaphthylene | 31. Fluoranthene |
| 3. Dichlorobenzene, 1,4- | 17. Dimethyl phthalate | 32. Pyrene |
| 4. Dichlorobenzene, 1,2- | 18. Dinitrotoluene, 2,6- | 33. Butylbenzyl phthalate |
| 5. Bis (2-chloroisopropyl) ether | 19. Acenaphthene | 34. Benz (a) anthracene |
| 6. N-nitroso di-n-propylamine | 20. Dinitrotoluene, 2,4- | 35. Chrysene |
| 7. Hexachloroethane | 21. Fluorene | 36. Dichlorobenzidine, 3,3' |
| 8. Nitrobenzene | 22. Diethyl phthalate | 37. Bis (2-ethylhexyl) phthalate |
| 9. Isophorone | 23. 4-Chlorophenyl phenyl ether | 38. Di-n-octyl phthalate |
| 10. Bis (2-chloroethoxy) methane | 24. N-Nitrosodiphenylamine | 39. Benzo (b) fluoranthene |
| 11. Trichlorobenzene, 1,2,4- | 25. Azobenzene | 40. Benzo (k) fluoranthene |
| 12. Naphthalene | 26. 4-Bromophenyl phenyl ether | 41. Benzo (a) fluoranthene |
| 14. Hexachlorocyclopentadiene | 27. Hexachlorobenzene | 42. Indeno (1,2,3-c,d) pyrene |
| | 28. Phenanthrene | 43. Dibenz (a,h) anthracene |
| | 29. Anthracene | 44. Benzo (g,h,i) perylene |



Column: HP-5MS, 19091S-433
Carrier: Helium, 33cm/sec (1 mL/min) constant flow,
Oven: 80° C (4 min), to 310° C (5 min) at 7° C/min
Injection: On-column, 1µL, inlet=83° C to 315° C (5 min) at 50° C/min.
Detector: 5971A MSD (280° C)

Urine Drug Screen on Ultra 2



Column: Ultra 2, 50m x 0.32mm ID, 0.52µm, 19091B-115
Carrier: Hydrogen 80cm³/sec
Injector: Splitless
Oven: 45° C for 1.5 min
 45-300° C at 6° C/min
Detector: FID