

HP-35

- (35% Phenyl) - methylpolysiloxane
- Equivalent to USP Phase G42

ID(mm)	Length	Film	Iso/Prog	Cat. No.
0.25	15m	0.25µm	300/320	19091G-131
	30m	0.25µm	300/320	19091G-133
	60m	0.25µm	300/320	19091G-136
0.32	30m	0.15µm	300/320	19091G-013
	30m	0.25µm	300/320	19091G-113
	30m	0.50µm	300/320	19091G-213

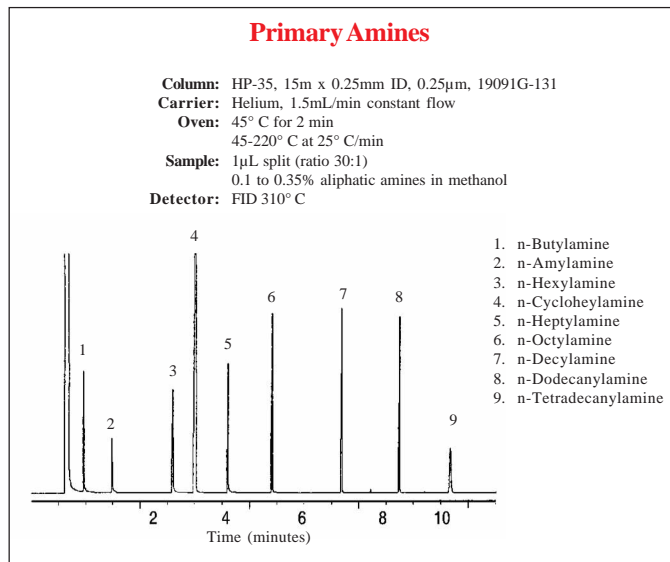


HP-FFAP

- Nitrorephthalic acid modified polyethylene glycol
- Designed for the analysis of volatile fatty acids and phenols
- Close equivalent to USP Phase G35

It is not recommend to use water or methanol to rinse this column.

ID(mm)	Length	Film	Iso/Prog	Cat. No.
0.2	25m	0.33µm	240/250	19091F-102
	50m	0.33µm	240/250	19091F-105
0.25	15m	0.25µm	240/250	19091F-431
	30m	0.25µm	240/250	19091F-433
0.32	15m	0.25µm	240/250	19091F-411
	25m	0.5µm	240/250	19091F-112
	30m	0.25µm	240/250	19091F-413
0.53	50m	0.5µm	240/250	19091F-115
	10m	1µm	230/240	19095F-121
	15m	1µm	230/240	19095F-120
30m	1µm	230/240	19095F-123	



HP-50+

- (50%)-Diphenyl-(50%)-Dimethylpolysiloxane
- Equivalent to USP Phase G3

ID(mm)	Length	Film	Iso/Prog	Cat. No.
0.20	12m	0.16µm	280/300	19091L-001
	12m	0.31µm	280/300	19091L-101
	25m	0.16µm	280/300	19091L-002
	25m	0.31µm	280/300	19091L-102
	50m	0.16µm	280/300	19091L-105
	50m	0.31µm	280/300	19091L-105
0.25	15m	0.15µm	280/300	19091L-331
	15m	0.25µm	280/300	19091L-431
	15m	0.50µm	280/300	19091L-131
	30m	0.15µm	280/300	19091L-333
	30m	0.25µm	280/300	19091L-433
	30m	0.50µm	280/300	19091L-133
	60m	0.25µm	280/300	19091L-436
	60m	0.50µm	280/300	19091L-116
0.32	15m	0.25µm	280/300	19091L-411
	15m	0.50µm	280/300	19091L-111
	30m	0.15µm	280/300	19091L-313
	30m	0.25µm	280/300	19091L-413
	30m	0.50µm	280/300	19091L-113
	60m	0.25µm	280/300	19091L-416
0.53	15m	1.00µm	260/280	19095L-021
	30m	0.50µm	260/280	19095L-523
	30m	1.00µm	260/280	19095L-023

HP-INNOWax

- Close equivalent to USP Phase G16

ID(mm)	Length	Film	Iso/Prog	Cat. No.
0.2	25m	0.11µm	260/270	19091N-102
	25m	0.33µm	260/270	19091N-202
	50m	0.11µm	260/270	19091N-105
	50m	0.33µm	260/270	19091N-205
0.25	15m	0.25µm	260/270	19091N-131
	15m	0.5µm	260/270	19091N-231
	30m	0.15µm	260/270	19091N-033
	30m	0.25µm	260/270	19091N-133
	30m	0.5µm	260/270	19091N-233
	60m	0.15µm	260/270	19091N-036
	60m	0.25µm	260/270	19091N-136
	60m	0.5µm	260/270	19091N-236
0.32	15m	0.25µm	260/270	19091N-111
	15m	0.5µm	260/270	19091N-211
	30m	0.15µm	260/200	19091N-013
	30m	0.25µm	260/270	19091N-113
	30m	0.5µm	260/270	19091N-213
	60m	0.15µm	260/270	19091N-016
0.53	60m	0.25µm	260/270	19091N-116
	60m	0.5µm	260/270	19091N-216
	15m	1µm	240/250	19095N-121
	30m	1µm	240/250	19095N-123
	60m	1µm	240/250	19095N-126