

DB-35

- (35%-Phenyl)-methylpolysiloxane
- Inert to active solutes
- Ideal for confirmational analyses
- Equivalent to USP Phase G42

| ID(mm) | Length | Film | Iso/Prog | Cat. No. |
|-------------|--------|--------|----------|-----------------|
| 0.25 | 30m | 0.25µm | 300/320 | 122-1932 |
| | 30m | 0.50µm | 300/320 | 122-1933 |
| | 30m | 1.00µm | 280/300 | 122-1934 |
| | 60m | 0.25µm | 300/320 | 122-1962 |
| 0.32 | 30m | 0.25µm | 300/320 | 123-1932 |
| | 30m | 0.50µm | 300/320 | 123-1933 |
| | 60m | 0.25µm | 300/320 | 123-1962 |
| 0.53 | 15m | 1.00µm | 280/300 | 125-1912 |
| | 30m | 0.50µm | 280/300 | 125-1937 |
| | 30m | 1.00µm | 260/280 | 125-1932 |
| | 60m | 1.00µm | 280/300 | 125-1962 |

DB-XLB

- Exceptionally Low Bleed
- Ideal for confirmational analyses
- Excellent for pesticides, herbicides, PCBs and PAHs
- Certified for MS

| ID(mm) | Length | Film | Iso/Prog | Cat. No. |
|-------------|-------------|--------|----------|-----------------|
| 0.18 | 20m | 0.18µm | 340/360 | 121-1222 |
| | 30m | 0.18µm | 340/360 | 121-1232 |
| | 60m | 0.18µm | 340/360 | 121-1262 |
| 0.20 | 12m | 0.33µm | 340/360 | 128-1212 |
| | 25m | 0.33µm | 340/360 | 128-1222 |
| 0.25 | 15m | 0.10µm | 340/360 | 122-1211 |
| | 15m | 0.25µm | 340/360 | 122-1212 |
| | 15m | 1.00µm | 340/360 | 122-1213 |
| | 30m | 0.10µm | 340/360 | 122-1231 |
| | 30m | 0.25µm | 340/360 | 122-1232 |
| | 30m | 0.50µm | 340/360 | 122-1236 |
| | 30m | 1.00µm | 340/360 | 122-1233 |
| | 60m | 0.25µm | 340/360 | 122-1262 |
| 0.32 | 15m | 0.25µm | 340/360 | 123-1212 |
| | 15m | 1.00µm | 340/360 | 123-1213 |
| | 30m | 0.10µm | 340/360 | 123-1231 |
| | 30m | 0.25µm | 340/360 | 123-1232 |
| | 30m | 0.50µm | 340/360 | 123-1236 |
| | 30m | 1.00µm | 340/360 | 123-1233 |
| | 60m | 0.25µm | 340/360 | 123-1262 |
| | 0.45 | 30m | 1.27µm | 320/340 |
| 0.53 | 15m | 1.50µm | 320/340 | 125-1212 |
| | 30m | 1.50µm | 320/340 | 125-1232 |

DB-XLB-MSD Tested

| | | | | |
|-------------|-----|--------|---------|-----------------|
| 0.25 | 30m | 0.25µm | 340/360 | 122-4432 |
|-------------|-----|--------|---------|-----------------|

*No special ferrules required for High Speed Megabore 0.45mm I.D.

DB-35ms

- Equivalent to (35%-Phenyl)-methylpolysiloxane
- Close equivalent to USP Phase G42

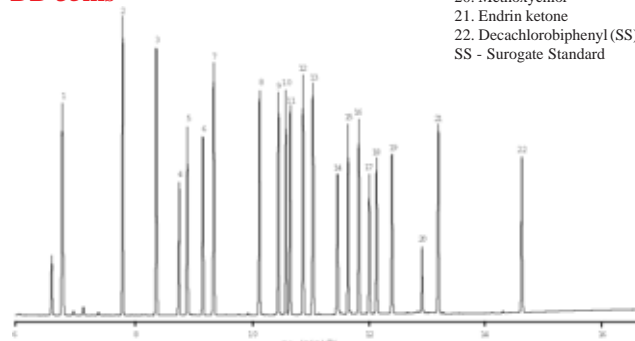
| ID(mm) | Length | Film | Iso/Prog | Cat. No. |
|-------------|--------|--------|----------|-----------------|
| 0.20 | 15m | 0.33µm | 340/360 | 128-3812 |
| | 25m | 0.33µm | 340/360 | 128-3822 |
| 0.25 | 15m | 0.25µm | 340/360 | 122-3812 |
| | 30m | 0.15µm | 340/360 | 122-3831 |
| | 30m | 0.25µm | 340/360 | 122-3832 |
| | 60m | 0.25µm | 340/360 | 122-3862 |
| | 60m | 0.25µm | 340/360 | 122-3862 |
| 0.32 | 15m | 0.25µm | 340/360 | 123-3812 |
| | 30m | 0.25µm | 340/360 | 123-3832 |
| | 60m | 0.25µm | 340/360 | 123-3862 |
| 0.53 | 15m | 1.00µm | 320/340 | 125-3812 |
| | 30m | 0.50µm | 320/340 | 125-3837 |
| | 30m | 1.00µm | 320/340 | 125-3832 |

CLP Pesticides

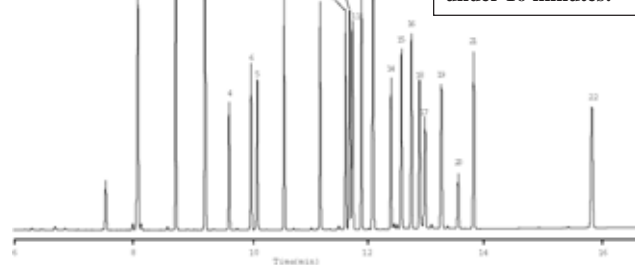
Column: DB-35ms, 30m x 0.32mm ID, 0.25µm, 123-3832
Column: DB-XLB, 30m x 0.32mm ID, 0.5µm, 123-1236
Carrier: Helium at 45cm/sec (EPC in constant flow mode)
Oven: 110° C for 0.5min
 110-320° C at 15°/min
 320° C for 2min
Injector: Splitless, 250° C
 30 sec purge activation time
 50pg per component
Detector: µECD, 350° C
 Nitrogen makeup gas
 (column + makeup flow = 30mL/min constant flow)

1. Tetrachloro-m-xylene (SS)
2. α-BHC
3. γ-BHC
4. β-BHC
5. Heptachlor
6. δ-BHC
7. Aldrin
8. Heptachlor epoxide
9. γ-Chlordane
10. α-Chlordane
11. Endosulfan I
12. 4,4'-DDE
13. Dieldrin
14. Endrin
15. 4,4'-DDD
16. Endosulfan II
17. 4, 4'-DDT
18. Endrin aldehyde
19. Endosulfan sulfate
20. Methoxychlor
21. Endrin ketone
22. Decachlorobiphenyl (SS)
- SS - Surogate Standard

DB-35ms



DB-XLB



Complete resolution and confirmation of 22 CLP Pesticides in under 16 minutes!