

J & W GC Capillary Columns

DB-17ms

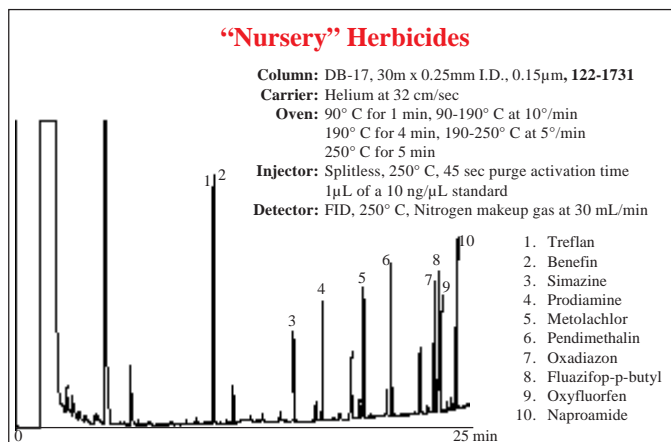
- Equivalent to a (50%-Phenyl)-methylpolysiloxane
- Best column for CLP pesticides

ID(mm)	Length	Film	Iso/Prog	Cat. No.
0.18	20m	0.18µm	320/340	121-4722
0.25	15m	0.15µm	320/340	122-4711
	15m	0.25µm	320/340	122-4712
	30m	0.15µm	320/340	122-4731
	30m	0.25µm	320/340	122-4732
	60m	0.25µm	320/340	122-4762
0.32	15m	0.15µm	320/340	123-4711
	15m	0.25µm	320/340	123-4712
	30m	0.15µm	320/340	123-4731
	30m	0.25µm	320/340	123-4732

DB-17

- (50%-Phenyl)-methylpolysiloxane
- Equivalent to USP Phase G3

ID(mm)	Length	Film	Iso/Prog	Cat. No.
0.05	10m	0.10µm	280/300	126-1713
0.10	10m	0.10µm	280/300	127-1712
	10m	0.20µm	280/300	127-1713
	20m	0.10µm	280/300	127-1722
	20m	0.20µm	280/300	127-1723
0.18	10m	0.18µm	280/300	121-1712
	10m	0.30µm	280/300	121-1713
	20m	0.18µm	280/300	121-1722
	20m	0.30µm	280/300	121-1723



DB-17 Continued

ID(mm)	Length	Film	Iso/Prog	Cat. No.	
0.20	25m	0.16µm	280/300	128-1721	
0.25	15m	0.15µm	280/300	122-1711	
	15m	0.25µm	280/300	122-1712	
	15m	0.50µm	280/300	122-1713	
	30m	0.15µm	280/300	122-1731	
	30m	0.25µm	280/300	122-1732	
	30m	0.50µm	280/300	122-1733	
	60m	0.25µm	280/300	122-1762	
	60m	0.50µm	280/300	122-1763	
	0.32	15m	0.15µm	280/300	123-1711
		15m	0.25µm	280/300	123-1712
15m		0.50µm	280/300	123-1713	
30m		0.15µm	280/300	123-1731	
30m		0.25µm	280/300	123-1732	
30m		0.50µm	280/300	123-1733	
60m		0.25µm	280/300	123-1762	
60m		0.50µm	280/300	123-1763	
0.45		15m	0.85µm	260/280	124-1712*
		30m	0.85µm	260/280	124-1732*
0.53	5m	2.00µm	260/280	125-1704	
	15m	0.10µm	260/280	125-1719	
	15m	0.25µm	260/280	125-1711	
	15m	0.50µm	280/300	125-1717	
	15m	1.00µm	260/280	125-1712	
	15m	1.50µm	260/280	125-1713	
	30m	0.25µm	260/280	125-1731	
	30m	0.50µm	260/280	125-1737	
	30m	1.00µm	260/280	125-1732	
	30m	1.50µm	260/280	125-1733	
	60m	1.00µm	260/280	125-1762	
	60m	1.50µm	260/280	125-1763	

*No special ferrules required for High Speed Megabore 0.45mm I.D.

DB-23

- (50%-Cyanopropyl)-methylpolysiloxane
- Separation of fatty acid methyl esters (FAMES) –
For maximum resolution of FAMES, check out Agilent’s new HP-88 on page 4
- Excellent resolution for cis- and trans-isomers
- Close equivalent to USP Phase G5

ID(mm)	Length	Film	Iso/Prog	Cat. No.
0.18	20m	0.20µm	250/260	121-2323
0.25	15m	0.25µm	250/260	122-2312
	30m	0.15µm	250/260	122-2331
	30m	0.25µm	250/260	122-2332
	60m	0.15µm	250/260	122-2361
	60m	0.25µm	250/260	122-2362
	0.32	15m	0.25µm	250/260
30m		0.15µm	250/260	123-2331
30m		0.25µm	250/260	123-2332
60m		0.15µm	250/260	123-2361
60m		0.25µm	250/260	123-2362
0.53		15m	0.50µm	230/240
	30m	0.50µm	230/240	125-2332