

J & W GC Capillary Columns

DB-608

- Specifically designed for the analysis of chlorinated pesticides and PCBs
- U.S. EPA Methods: 608, 508, 8080
- Excellent inertness and recoveries without pesticide breakdown

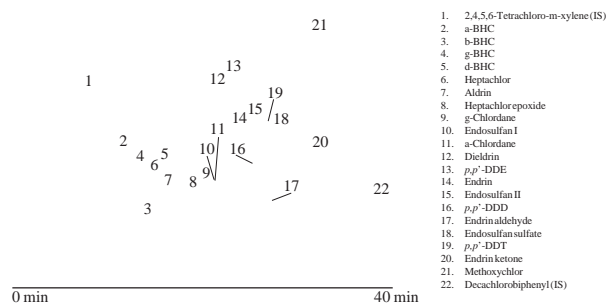
ID(mm)	Length	Film	Iso/Prog	Cat. No.
0.25	30m	0.25µm	280/300	122-6832
0.32	30m	0.50µm	280/300	123-1730
0.45	30m	0.42µm	260/280	124-6837*
	30m	0.70µm	260/280	124-1730*
0.53	15m	0.83µm	260/280	125-1710
	30m	0.50µm	260/280	125-6837
	30m	0.83µm	260/280	125-1730

*No special ferrules required for High Speed Megabore 0.45mm I.D.



Alditol Acetates

Column: DB-608, 30m x 0.53mm ID, 0.5µm
 J&W P/N: 125-6837
 Carrier: Helium at 30 cm/sec
 Oven: 150-275° C at 4°/min, 275° C for 30 min
 Injector: Megabore Direct, 250° C, 0.7µL of 100 pg/µL standard in isoctane
 Detector: ECD, 300° C, Nitrogen makeup gas at 30 mL/min.



DB-HT Sim Dis

- 100% Dimethylpolysiloxane
- “Boiling Point” phase for high temperature simulated distillation
- Durable Stainless Steel tubing
- 430° C upper temperature limit
- Distillation range of C₆ to C₁₁₀₊
- Low bleed – even at 430° C!

ID(mm)	Length	Film	Iso/Prog	Cat. No.
0.53	5m	0.15µm	400/430	145-1001

DB-1701P

- (14%-Cyanopropylphenyl)-methylpolysiloxane
- Low / midpolarity
- Designed for the analysis of organochlorine pesticides
- ECD tested to assure minimal pesticide breakdown and low ECD bleed

ID(mm)	Length	Film	Iso/Prog	Cat. No.
0.25	30m	0.25µm	280/300	122-7732
0.32	30m	0.25µm	280/300	123-7732
0.53	30m	1.00µm	260/280	125-7732

DB-2887

- 100% Dimethylpolysiloxane
- Designed for simulated distillation ASTM Method D2887

ID(mm)	Length	Film	Iso/Prog	Cat. No.
0.53	10m	3.00µm	-60 to 350	125-2814

DB-Petro

- 100% Dimethylpolysiloxane
- Configured for the analysis of petroleum process products
- PONA, PIANO

ID(mm)	Length	Film	Iso/Prog	Cat. No.
0.20	50m	0.50µm	325/350	128-1056
0.25	100m	0.50µm	325/350	122-10A6

DB-Dioxin

- Engineered for the analysis of Polychlorinated Dibenzodioxins (PCDDs) and Dibenzofurans (PCDF)
- Resolves 2, 3, 7, 8-TCDD and 2, 3, 7, 8-TCDF from all other isomers in one run

ID(mm)	Length	Film	Iso/Prog	Cat. No.
0.25	60m	0.15µm	250/270	122-2461
	60m	0.25µm	250/270	122-2462
0.32	60m	0.19µm	250/270	123-2461
	60m	0.32µm	250/270	123-2462