

BPX50

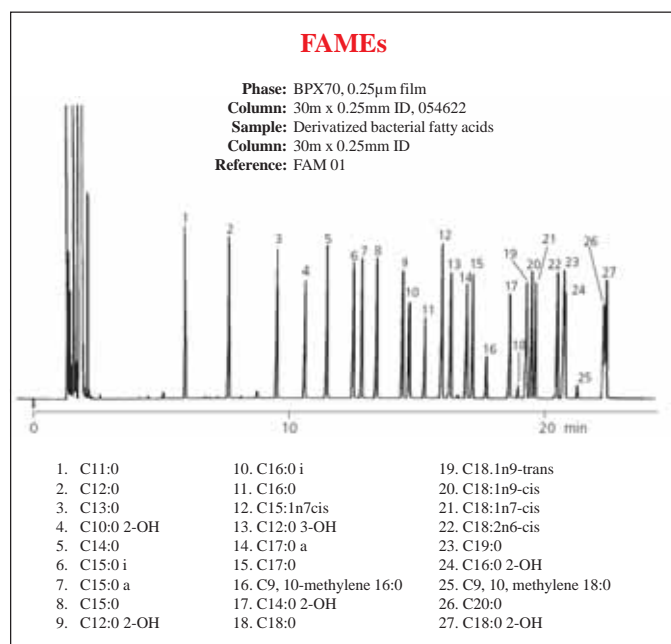
- 50% Phenyl polysilphenylene-siloxane
- Ultra low bleed
- Ideal for EPA methods 604, 608, 8060, 8081, triazines/ herbicides, drug screening, steroids and a variety of pharmaceutical applications

| ID(mm) | Length | Film | Iso/Prog | Cat. No. |
|-------------|--------|--------|----------|---------------|
| 0.10 | 10m | 0.10µm | 360/370 | 054740 |
| 0.15 | 30m | 0.15µm | 360/370 | 054741 |
| 0.25 | 15m | 0.25µm | 360/370 | 054750 |
| | 30m | 0.25µm | 360/370 | 054751 |
| | 60m | 0.25µm | 360/370 | 054752 |
| 0.32 | 15m | 0.25µm | 360/370 | 054760 |
| | 30m | 0.25µm | 360/370 | 054761 |
| | 60m | 0.25µm | 360/370 | 054762 |
| 0.53 | 15m | 0.50µm | 360/370 | 054770 |
| | 30m | 0.50µm | 360/370 | 054771 |
| | 30m | 1.00µm | 360/370 | 054772 |

BPX70

- 70% Cyanopropyl polysilphenylene-siloxane
- Custom designed for separation of Fatty Acid Methyl Esters (FAMES)
- Ideal for cis/trans isomer separation

| ID(mm) | Length | Film | Iso/Prog | Cat. No. |
|-------------|--------|--------|----------|---------------|
| 0.10 | 10m | 0.20µm | 250/260 | 054600 |
| 0.22 | 12m | 0.25µm | 250/260 | 054601 |
| | 25m | 0.25µm | 250/260 | 054602 |
| | 30m | 0.25µm | 250/260 | 054612 |
| | 50m | 0.25µm | 250/260 | 054603 |
| | 60m | 0.25µm | 250/260 | 054613 |



BPX70 Continued

| ID(mm) | Length | Film | Iso/Prog | Cat. No. |
|-------------|--------|--------|----------|---------------|
| 0.25 | 15m | 0.25µm | 250/260 | 054621 |
| | 30m | 0.25µm | 250/260 | 054622 |
| | 60m | 0.25µm | 250/260 | 054623 |
| | 125m | 0.25µm | 250/260 | 054624 |
| 0.32 | 12m | 0.25µm | 250/260 | 054605 |
| | 25m | 0.25µm | 250/260 | 054606 |
| | 30m | 0.25µm | 250/260 | 054616 |
| | 50m | 0.25µm | 250/260 | 054607 |
| 0.53 | 60m | 0.25µm | 250/260 | 054617 |
| | 15m | 0.50µm | 250/260 | 054619 |
| | 25m | 0.50µm | 250/260 | 054610 |
| | 30m | 0.50µm | 250/260 | 054620 |

BP20 (WAX)

- Polyethylene glycol (PEG)
- Ideal for alcohol, ester and aldehyde analysis
- Cross-linked for stability and washing

| ID(mm) | Length | Film | Iso/Prog | Cat. No. |
|-------------|--------|---------|----------------|---------------|
| 0.22 | 12m | 0.25µm | 260/280 | 054420 |
| | 25m | 0.25µm | 260/280 | 054421 |
| | 30m | 0.25µm | 260/280 | 054424 |
| | 50m | 0.25µm | 260/280 | 054422 |
| | 60m | 0.25µm | 260/280 | 054425 |
| 0.25 | 15m | 0.25µm | 260/280 | 054426 |
| | 30m | 0.25µm | 260/280 | 054427 |
| | 30m | 0.50µm | 260/280 | 054415 |
| | 30m | 1.0µm | 260/280 | 054439 |
| | 60m | 0.25µm | 260/280 | 054428 |
| | 60m | 0.50µm | 260/280 | 054458 |
| 0.32 | 15m | 0.25µm | 260/280 | 054432 |
| | 25m | 0.25µm | 260/280 | 054430 |
| | 25m | 0.50µm | 260/280 | 054436 |
| | 25m | 1.00µm | 260/280 | 054442 |
| | 30m | 0.25µm | 260/280 | 054433 |
| | 30m | 0.50µm | 260/280 | 054438 |
| | 30m | 1.00µm | 260/280 | 054444 |
| | 50m | 0.25µm | 260/280 | 054431 |
| | 50m | 0.50µm | 260/280 | 054437 |
| | 50m | 1.00µm | 260/280 | 054443 |
| | 60m | 0.25µm | 260/280 | 054434 |
| 60m | 0.50µm | 260/280 | 054457 | |
| 60m | 1.00µm | 260/280 | 054445 | |
| 0.53 | 12m | 1.00µm | 260/280 | 054447 |
| | 12m | 2.00µm | 240/260 | 054455 |
| | 15m | 1.00µm | 260/280 | 054450 |
| | 25m | 1.00µm | 260/280 | 054448 |
| | 25m | 2.00µm | 240/260 | 054456 |
| | 30m | 0.50µm | 260/280 | 054440 |
| 30m | 1.00µm | 260/280 | 054451 | |
| 60m | 1.00µm | 260/280 | 0544515 | |