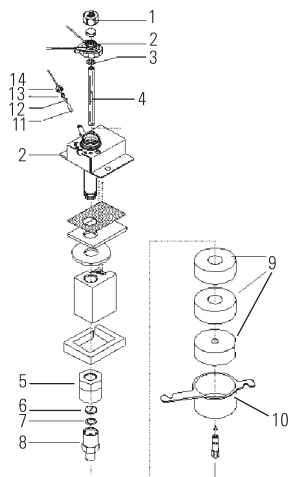
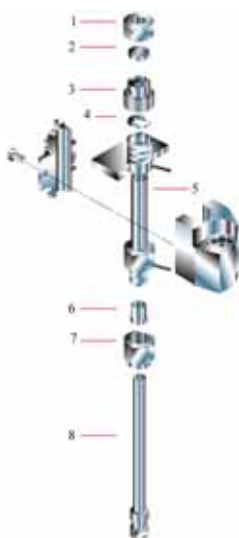


# GC Supplies

## Agilent Instrument Parts and Supplies



5890 Split/Splitless Inlet



5890 Septum-Purged Packed Column Inlet

### 5890 Split/Splitless Inlet Supplies

Cat. No.	Description
18740-60835	<sup>1</sup> Septum retainer nut
18740-60830	Retainer nut for headspace sampling
19251-60575	<sup>2</sup> Split/splitless insert weldment with tubing
5180-4168	<sup>3</sup> Graphite O-ring for split liner, 10/pk
5180-4173	Graphite O-ring for splitless liner, 10/pk
5180-4182	Fluorocarbon elastomer O-ring, 12/pk
19251-20620	<sup>5</sup> Retaining nut
18740-20880	<sup>6</sup> SS seal
18740-20885	Gold plated seal
5182-9652	Gold plated seal, cross
5061-5869	<sup>7</sup> Washer, 12/pk
18740-20800	<sup>8</sup> Reducing nut
19243-00067	<sup>9</sup> Insulation (must order quantity 3)

#### For Split/Splitless Inlets using Electronic Pressure Control

Cat. No.	Description	Qty.
19251-80525	Splitter tube*	1
5180-4109	Front ferrule, 1/8" brass	10
5180-4115	Back ferrule, 1/8" brass	10
5180-4103	Tubing nut, 1/8" brass	10
5180-4153	Capillary inlet cleaning wires	5

\* Includes 1 each of 5180-4109, 5180-4115, 5180-4103.



18740-20885  
Gold plated seal

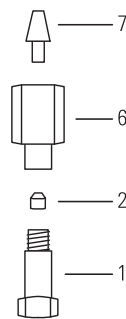
### 5890 Packed Column Inlet Supplies

#### Septum purged packed column inlet

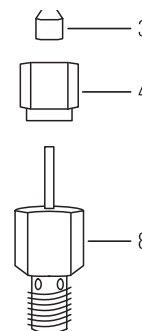
Cat. No.	Description
18740-60835	<sup>1</sup> Septum retainer nut
18740-60830	Headspace septum retainer nut
5183-4757	<sup>2</sup> Septa, BTO, 11mm OD, 50/pk
19243-80570	<sup>3</sup> Top insert weldment
5080-8898	<sup>4</sup> Fluorocarbon elastomer O-rings, 12/pk
5080-8774	<sup>6</sup> Vespel ferrules, 10/pk
5180-4105	<sup>7</sup> Tubing nut, 1/4" brass, 10/pk
19244-80540	<sup>8</sup> 0.53mm column adapter w/glass liner
19243-80530	1/8" column adapter w/glass liner
5080-8732	Glass liner, disposable, 170µL, 25/pk
5181-3382	Glass liner, disposable, deact, 170µL, 5/pk

### 5890 Cool On-Column Inlet Supplies

Cat. No.	Description
19245-60760	Spring
19245-20580	Inserts for 530µm columns (no rings)



TCD Capillary  
without Makeup Adapter



TCD for Packed or 1/4"  
Glass Column

### 5890 TCD Supplies

Cat. No.	Description
5181-8830	<sup>1</sup> Capillary column nut, 2/pk
5080-8853	<sup>2</sup> Graphite ferrule, 0.5mm ID, 10/pk
5080-8773	Graphite ferrule, 1.0mm ID, 10/pk
0100-1332	<sup>3</sup> Vespel ferrule, 1/8" ID, 10/pk
5180-4103	<sup>4</sup> Tubing nut, 1/8" brass, 10/pk
18740-20960	<sup>6</sup> TCD column adapter for capillary columns
18740-20950	<sup>7</sup> TCD column adapter seal
19302-80020	<sup>8</sup> TCD column adapter, 1/8" to 1/4" glass
19232-60676	TCD replacement cartridge