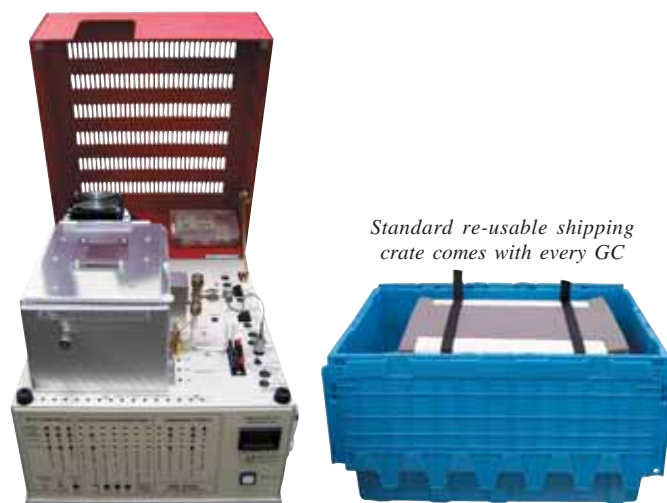


SRI Gas Chromatographs Model 8610C Chassis and Preconfigured Educational GC's

Injector Options, Step 3: Choose up to 5 per GC

The On-Column injector is standard equipment on every 8610C SRI GC. Heated Flash Vaporization, Heated Split/Splitless, and PTV injectors are upgrades to the On-Column injector. All injectors must be installed at the factory.

| Cat. No. | Description |
|-----------|--|
| 8690-0023 | On-Column injector (.53mm and 1/8") |
| 8690-0025 | Heated flash vaporization injector upgrade |
| 8690-0034 | Heated split/splitless injector upgrade |
| 8690-0045 | Heated static headspace injector |
| 8690-1088 | Thermal soil desorber |
| 8690-0063 | 10 Port gas sampling valve (manual) |
| 8690-0065 | 10 Port gas sampling valve (electric) |
| 8690-0088 | Thermostatted valve oven |
| 8690-0084 | Heated/fast cooling adsorbent trap |
| 8690-0051 | Method 5030 style purge and trap |
| 8690-0052 | Method 5035 compliant purge and trap |
| 8680-0052 | Method 5035 VOA vial sparger |
| 8690-1051 | Method TO-14 air concentrator |



Standard re-usable shipping crate comes with every GC

Educational GC System

- TCD or FID detector
- Single channel PeakSimple data system
- 1-meter Silica Gel column
- ... on the ultra compact 310 chassis

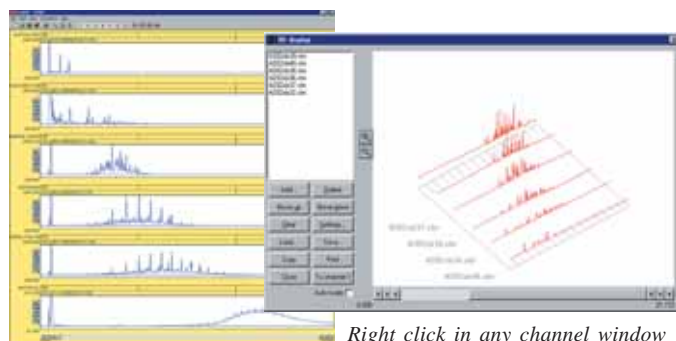
The Educational GC is ideal for the undergraduate chemistry classes where the principles of gas chromatography are demonstrated, or for graduate level research. Because of their low cost and upgrade-ability* with other SRI detectors and injectors, these GCs are also widely used by thrifty labs for simple applications such as general organics analysis, landfill gas analysis, stack monitoring, and quality control.

The on-column injector is ideal for 1/8" packed or 0.53mm wide-bore capillary columns. The column oven accepts column cage diameters up to 4 inches, is temperature programmable to 400° C, and comes with fast cool-down fans. Electronic Pressure Control (EPC) for the carrier gas provides rock-solid retention time reproducibility.

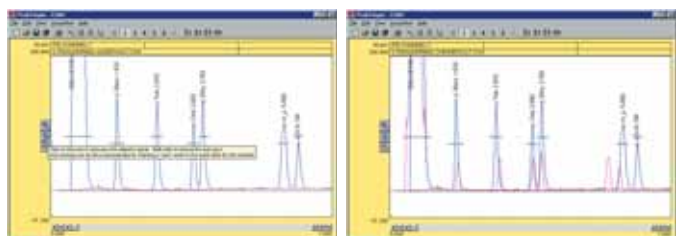
The built-in single channel PeakSimple data system provides powerful yet easy data acquisition and temperature programming for the column oven.

| Cat. No. | Description |
|-----------|---------------------------------|
| 0310-1000 | Educational TCD on 310° chassis |
| 0310-0004 | Educational FID on 310° chassis |

*Educational models are less expensive than equivalent GCs manufactured "a la carte" because of batch manufacturing efficiencies. No customization of educational models is available prior to initial sale, although normal factory retrofit services are available after delivery.



Right click in any channel window to loads its 3D display



PeakSimple Data System

A single channel data system is standard equipment in a SRI GC. If you'll be ordering more than one detector on your GC, you will need a four or six channel data system. The one and four channel data system connect to your computer's serial port, while the six channel model connects to the USB port.

| Cat. No. | Description |
|-----------|---------------------------------------|
| 8600-1055 | PeakSimple single channel data system |
| 8600-4055 | PeakSimple 4 channel data system |
| 8600-6055 | PeakSimple 6 channel USB data system |