

# ChromTech Chiral HPLC Columns

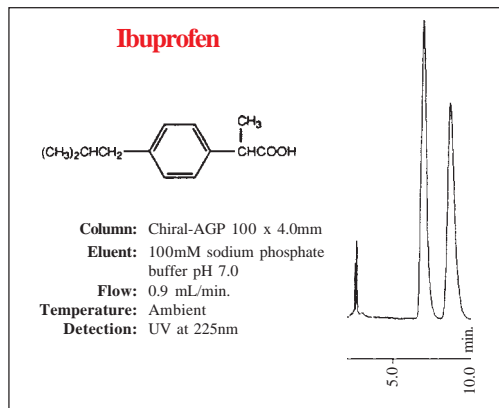
## Chiral Column Selection Guide

### Column Applicability (type of samples)

<b>Chiral-AGP</b>	Extremely broad applicability. Most likely the column with the broadest applicability of all chiral columns. Separates all kinds of compounds: <ul style="list-style-type: none"><li>amines (primary, secondary, tertiary and quaternary)</li><li>acids (strong and weak)</li><li>nonprotolytes (amides, esters, alcohols)</li></ul>
<b>Chiral-CBH</b>	More narrow applicability than CHIRAL-AGP. Separates compounds containing one or more basic nitrogens together with one or more hydrogen accepting or hydrogen donating groups (alcohol, phenol, carbonyl, amide, ether, sulphoxide, ester, etc.).
<b>Chiral-HSA</b>	More narrow applicability than CHIRAL-AGP. Separates preferentially weak and strong acids and non-protolytic compounds.

The columns overlap for some types of compounds; basic compounds can be separated on both CHIRAL-AGP and CHIRAL-CBH, acidic and neutral compounds can be separated on both CHIRAL-AGP and CHIRAL-HSA. However, as **CHIRAL-AGP** is a column with an extremely broad applicability, this column should be chosen first, if the analyte has not been separated on any of the columns. There are, however, some types of compounds where one of the other columns may be the first choice:

CHIRAL-HSA: very hydrophilic acids  
CHIRAL-CBH: very hydrophilic amines



## Columns for Drug Protein Binding Study

HPLC is a convenient method to use for the determination of the degree of the drug/protein binding. We supply a range of HPLC columns that can be used for these kind of studies:

**CHIRAL-HSA:** human serum albumin  
**CHIRAL-AGP:**  $\alpha_1$ -acid glycoprotein  
**CHIRAL-RSA:** rat serum albumin  
**CHIRAL-DSA:** dog serum albumin  
**CHIRAL-MSA:** mouse serum albumin

Albumins from other species also available, please contact Chrom Tech for pricing.

## Chiral Column Price List

### Chiral-AGP

Cat.No.	Description
<b>CT-20054</b>	Chiral-AGP, 4.0 x 50mm, 5 $\mu$ m
<b>CT-20104</b>	Chiral-AGP, 4.0 x 100mm, 5 $\mu$ m
<b>CT-20154</b>	Chiral-AGP, 4.0 x 150mm, 5 $\mu$ m
<b>CT-200142</b>	Chiral-AGP, 4.0 x 10mm, guard cart, 2/pk
<b>CT-20053</b>	Chiral-AGP, 3.0 x 50mm, 5 $\mu$ m
<b>CT-20103</b>	Chiral-AGP, 3.0 x 100mm, 5 $\mu$ m
<b>CT-20153</b>	Chiral-AGP, 3.0 x 150mm, 5 $\mu$ m
<b>CT-200132</b>	Chiral-AGP, 3.0 x 10mm, guard cart, 2/pk
<b>CT-20052</b>	Chiral-AGP, 2.0 x 50mm, 5 $\mu$ m
<b>CT-20102</b>	Chiral-AGP, 2.0 x 100mm, 5 $\mu$ m
<b>CT-20152</b>	Chiral-AGP, 2.0 x 150mm, 5 $\mu$ m
<b>CT-200122</b>	Chiral-AGP, 2.0 x 10mm, guard cart, 2/pk
<b>CT-201010</b>	Chiral-AGP, 10.0 x 100mm, 5 $\mu$ m
<b>CT-201510</b>	Chiral-AGP, 10.0 x 150mm, 5 $\mu$ m

### Chiral-CBH

<b>CT-25054</b>	Chiral-CBH, 4.0 x 50mm, 5 $\mu$ m
<b>CT-25104</b>	Chiral-CBH, 4.0 x 100mm, 5 $\mu$ m
<b>CT-25154</b>	Chiral-CBH, 4.0 x 150mm, 5 $\mu$ m
<b>CT-250142</b>	Chiral-CBH, 4.0 x 10mm, guard cart, 2/pk
<b>CT-25053</b>	Chiral-CBH, 3.0 x 50mm, 5 $\mu$ m
<b>CT-25103</b>	Chiral-CBH, 3.0 x 100mm, 5 $\mu$ m
<b>CT-25153</b>	Chiral-CBH, 3.0 x 150mm, 5 $\mu$ m
<b>CT-250132</b>	Chiral-CBH, 3.0 x 10mm, guard cart, 2/pk
<b>CT-25052</b>	Chiral-CBH, 2.0 x 50mm, 5 $\mu$ m
<b>CT-25102</b>	Chiral-CBH, 2.0 x 100mm, 5 $\mu$ m
<b>CT-25152</b>	Chiral-CBH, 2.0 x 150mm, 5 $\mu$ m
<b>CT-250122</b>	Chiral-CBH, 2.0 x 10mm, guard cart, 2/pk
<b>CT-251010</b>	Chiral-CBH, 10.0 x 100mm, 5 $\mu$ m
<b>CT-251510</b>	Chiral-CBH, 10.0 x 150mm, 5 $\mu$ m

### Chiral-HSA

<b>CT-29054</b>	Chiral-HSA, 4.0 x 50mm, 5 $\mu$ m
<b>CT-29104</b>	Chiral-HSA, 4.0 x 100mm, 5 $\mu$ m
<b>CT-29154</b>	Chiral-HSA, 4.0 x 150mm, 5 $\mu$ m
<b>CT-290142</b>	Chiral-HSA, 4.0 x 10mm, guard cart, 2/pk
<b>CT-29053</b>	Chiral-HSA, 3.0 x 50mm, 5 $\mu$ m
<b>CT-29103</b>	Chiral-HSA, 3.0 x 100mm, 5 $\mu$ m
<b>CT-29153</b>	Chiral-HSA, 3.0 x 150mm, 5 $\mu$ m
<b>CT-290132</b>	Chiral-HSA, 3.0 x 10mm, guard cart, 2/pk
<b>CT-29052</b>	Chiral-HSA, 2.0 x 50mm, 5 $\mu$ m
<b>CT-29102</b>	Chiral-HSA, 2.0 x 100mm, 5 $\mu$ m
<b>CT-29152</b>	Chiral-HSA, 2.0 x 150mm, 5 $\mu$ m
<b>CT-290122</b>	Chiral-HSA, 2.0 x 10mm, guard cart, 2/pk
<b>CT-291010</b>	Chiral-HSA, 10.0 x 100mm, 5 $\mu$ m
<b>CT-291510</b>	Chiral-HSA, 10.0 x 150mm, 5 $\mu$ m

### Chiral-RSA

<b>RSA504</b>	Rat serum albumin, 4.0 x 50mm, 5 $\mu$ m
<b>RSA503</b>	Rat serum albumin, 3.0 x 50mm, 5 $\mu$ m

### Chiral-MSA

<b>MSA504</b>	Mouse serum albumin, 4.0 x 50mm, 5 $\mu$ m
<b>MSA503</b>	Mouse serum albumin, 3.0 x 50mm, 5 $\mu$ m

### Chiral-DSA

<b>DSA504</b>	Dog serum albumin, 4.0 x 50mm, 5 $\mu$ m
<b>DSA503</b>	Dog serum albumin, 3.0 x 50mm, 5 $\mu$ m

### Accessories

<b>731441</b>	Guard cartridge holder
<b>U-287</b>	Column coupler (connects guard to column)