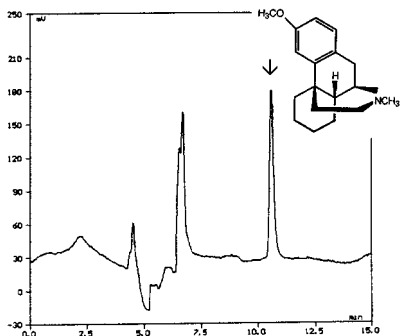


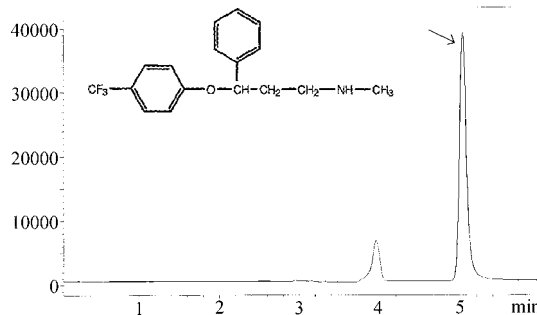
ChromTech BioTrap 500 Applications

Dextromethorphan



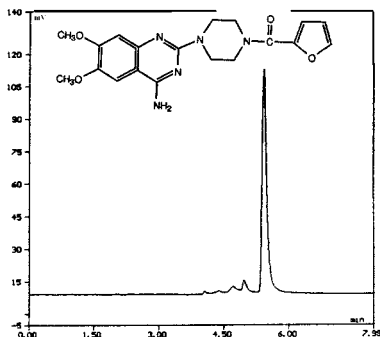
Sample: Dextromethorphan (55ng/mL)
Inj.vol.: 200µL serum
Extraction column: BioTrap 500 C8, 20x4.0mm
Mobile phase: 4% 2-propanol and 5mM sod.octanesulfonic acid in 20mM sod. ph.b. pH 7.0
Flow: 1.6mL/min.
Analytical column: Zorbax XDB-C8, 5µm, 150x4.6mm + guard
Mobile phase: 30% acetonitrile and 2mM sod. octanesulfonic acid in 116mM sod. ph.b. pH 2.8
Flow: 1.0mL/min.
Detection: Ex = 220nm, Em = 305nm
Analysis Program
Extraction time: 3 min.
Elution time: 5 min.
Equilibration time: 7 min.

Extraction of Amines Fluoxetine – MS Detection



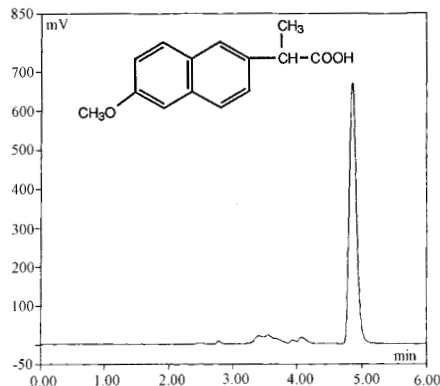
Sample: Fluoxetine 50 ng/mL
Injection volume: 50µL serum
Extraction column: BioTrap 500 MS, 20x4.0mm
Extraction conditions: 4% 2-propanol in 10mM ammonium acetate buffer, pH 10 (adjusted w/amonium hydroxide)
Extraction flow: 3.2mL/min.
Analytical column: Zorbax SB-CN, 150x4.6mm, 5µm + guard 12.5x4.6mm, 5µm
Mobile phase: 35% acetonitrile in 50mM formic acid
Flow: 1mL/min.
Detection: HP 1100 LC/MSD, API-ES positive at 310.1
Analysis Program
Extraction time: 1 min.
Elution time: 3 min.
Equilibration time: 2 min.

Prazosin



Sample: Prazosin (23ng/mL)
Inj.vol.: 50µL serum
Extraction column: BioTrap 500 C18, 20x4.0mm
Mobile phase (ext.): 4% 2-propanol and 5mM sod.octanesulfonic acid in 30mM sod. ph.b. pH 7.0
Flow: 1.6mL/min.
Analytical column: Zorbax SB-CN, 150x4.6mm, 5µm + guard
Mobile phase: 35% acetonitrile and 2mM sod. octanesulfonic acid in 116mM sod. ph.b. pH 2.8
Flow: 1.0mL/min.
Detection: Ex = 340nm, Em = 385nm
Analysis Program
Extraction time: 2 min.
Elution time: 4 min.
Equilibration time: 2 min.

Extraction of Acids Naproxen



Sample: Naproxen 3.4 µg/mL
Injection volume: 10µL serum
Extraction column: BioTrap 500 MS, 20x4.0mm
Extraction conditions: 4% 2-propanol in 100mM formic acid
Extraction flow: 3.2mL/min.
Analytical column: Zorbax XDB-C8, 150x4.6mm, 5µm + guard 12.5x4.6mm, 5µm
Mobile phase: 30% acetonitrile in 25mM ammonium acetate
Flow: 1mL/min.
Detection: Fluorescence: ex=230nm, em=350nm
Analysis Program
Extraction time: 1 min.
Elution time: 3 min.
Equilibration time: 2 min.