

PRP-3 and PRP-Infinity

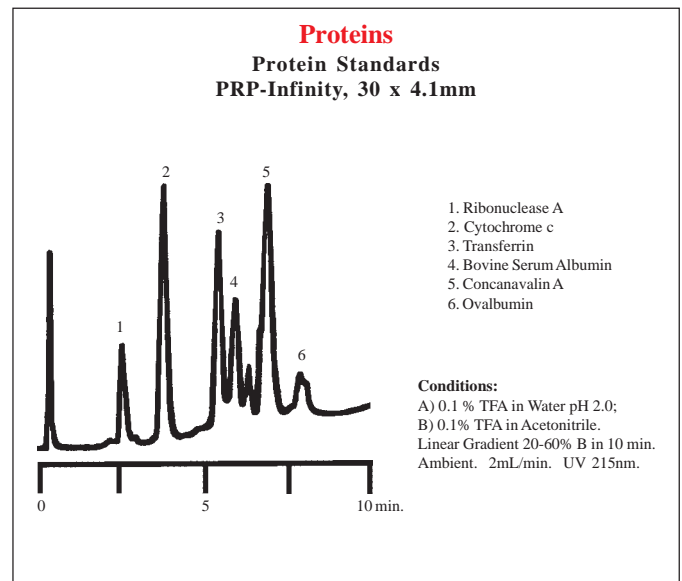
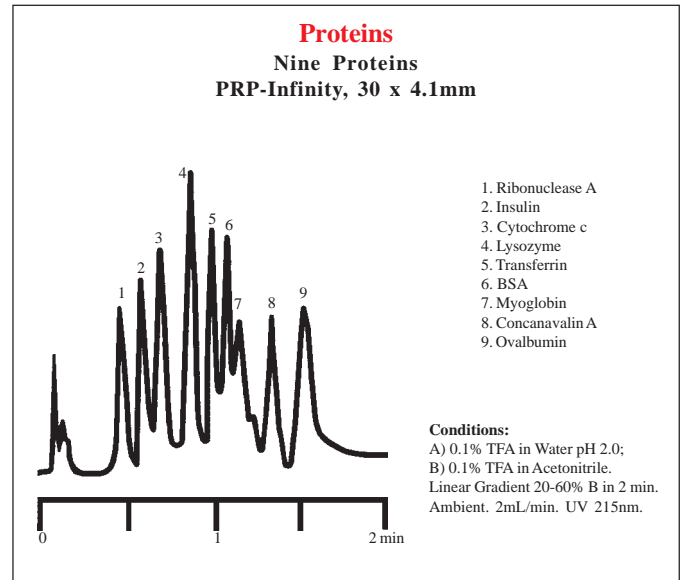
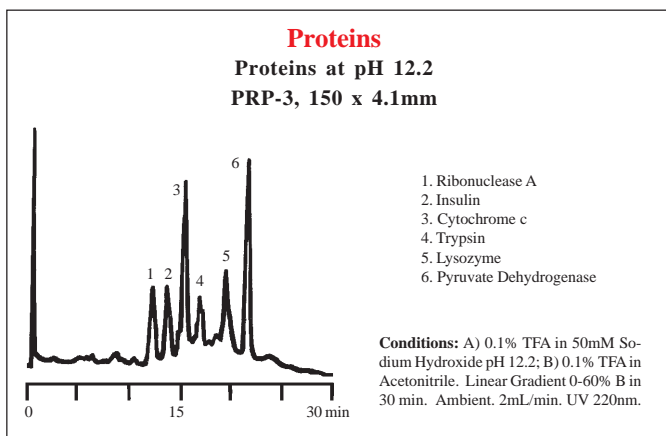
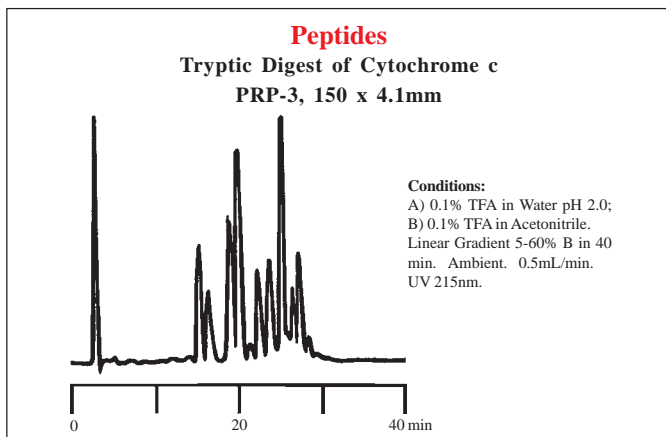
- PRP-3, 300Å pore sized resins designed for the purification and isolation of proteins, peptides, and DNA oligomers
- PRP-Infinity, non-porous resins designed for the fast gradient separation of proteins
- pH stability of 1 to 13 allows the separation of biological samples in their natural state
- Excellent sample recoveries due to the lack of acidic silanol groups

PRP-3 Reversed Phase

PRP-3 columns are able to analyze protein purity quickly at both low and high pH extremes. A single peak on a chromatogram is no guarantee of protein purity. However, when a single peak is found at both pH extremes, chances are that the protein is pure. The highly inert polymeric resin reduces non-specific binding and enhances protein recovery.

PRP-Infinity Reversed Phase

PRP-Infinity columns simplify the separation of high molecular weight proteins. The non-porous resin produces a column capable of fast, high resolution results. The short separation time minimizes band broadening which keeps peaks narrow and detectability high.



PRP-3 Reversed Phase Analytical Columns

Cat. No.	Description
79807	3µm, 4.1 x 50mm
79809	3µm, 4.1 x 150mm
79467	10µm, 4.1 x 50mm
79466	10µm, 4.1 x 150mm

Microbore

79392	10µm, 2.1 x 150mm
-------	-------------------

PRP-Infinity Reversed Phase Analytical Columns

79470	4µm, 4.1 x 33mm
-------	-----------------

Guard Columns

79461	Starter kit (one holder and two cartridges)
79454	Steel column replacement cartridges, 5/pk
79393	PEEK Starter kit (one holder and two cartridges)
79395	PEEK Replacement cartridges, 5/pk