

# SGE GC Capillary Columns

## BP1

- 100% Dimethyl polysiloxane
- Excellent general purpose column

ID(mm)	Length	Film	Iso/Prog	Cat. No.
<b>0.10</b>	10m	0.10µm	360	<b>054022</b>
<b>0.15</b>	12m	0.25µm	360	<b>054028</b>
	25m	0.25µm	360	<b>054029</b>
<b>0.22</b>	12m	0.10µm	360	<b>054040</b>
	12m	0.25µm	360	<b>054046</b>
	12m	1.00µm	360	<b>054052</b>
	15m	0.25µm	360	<b>054049</b>
	25m	0.10µm	360	<b>054041</b>
	25m	0.25µm	360	<b>054047</b>
	25m	1.00µm	360	<b>054053</b>
	30m	0.25µm	360	<b>054050</b>
	50m	0.10µm	360	<b>054042</b>
	50m	0.25µm	360	<b>054048</b>
<b>0.25</b>	50m	1.00µm	360	<b>054054</b>
	60m	0.25µm	360	<b>054051</b>
	15m	0.25µm	360	<b>054043</b>
	30m	0.25µm	360	<b>054044</b>
	30m	0.50µm	360	<b>054820</b>
	30m	1.00µm	360	<b>054056</b>
	60m	0.25µm	360	<b>054045</b>
	60m	0.50µm	360	<b>054812</b>
	60m	1.00µm	360	<b>054815</b>
	100m	0.50µm	360	<b>054818</b>
<b>0.32</b>	12m	0.25µm	360	<b>054058</b>
	12m	0.50µm	360	<b>054064</b>
	12m	1.00µm	360	<b>054070</b>
	15m	0.25µm	360	<b>054061</b>
	25m	0.25µm	360	<b>054059</b>
	25m	0.50µm	360	<b>054065</b>
	25m	1.00µm	360	<b>054071</b>
	25m	4.00µm	280/300	<b>054076</b>
	25m	5.00µm	280/300	<b>054081</b>
	30m	0.25µm	360	<b>054062</b>
	30m	0.50µm	360	<b>054068</b>
	30m	1.00µm	360	<b>054813</b>
	30m	1.50µm	280/300	<b>054811</b>
	30m	3.00µm	300/320	<b>054073</b>
	30m	4.00µm	280/300	<b>054077</b>
	50m	0.25µm	360	<b>054060</b>
	50m	0.50µm	360	<b>054066</b>
	50m	1.00µm	360	<b>054072</b>
	50m	5.00µm	280/300	<b>054082</b>
	60m	0.25µm	360	<b>054067</b>
60m	0.50µm	340/360	<b>054069</b>	
60m	1.00µm	360	<b>054810</b>	
60m	5.00µm	280/300	<b>054085</b>	

## BP1 Continued

ID(mm)	Length	Film	Iso/Prog	Cat. No.
<b>0.53</b>	12m	1.00µm	360	<b>054086</b>
	12m	3.00µm	280/300	<b>054097</b>
	15m	0.50µm	340/360	<b>054870</b>
	15m	1.00µm	360	<b>054089</b>
	25m	1.00µm	360	<b>054087</b>
	25m	3.00µm	280/300	<b>054098</b>
	25m	5.00µm	280/300	<b>054095</b>
	30m	0.50µm	340/360	<b>054092</b>
	30m	1.00µm	360	<b>054090</b>
	30m	2.60µm	280/300	<b>054819</b>
	30m	3.00µm	280/300	<b>054808</b>
	30m	5.00µm	280/300	<b>054806</b>
	50m	1.00µm	360	<b>054088</b>
	50m	5.00µm	280/300	<b>054096</b>
	60m	0.50µm	280/300	<b>054871</b>
	60m	3.00µm	280/300	<b>054809</b>
	60m	5.00µm	280/300	<b>054807</b>

## SolGel-1ms™

- Sol-gel phase is anchored to the surface of the fused silica through covalent bonding
- Extremely inert
- Low bleed MS grade column

### SolGel-1ms™

ID(mm)	Length	Film	Iso/Prog	Cat. No.
<b>0.25</b>	30m	0.25µm	370/380	<b>054795</b>
	60m	0.25µm	370/380	<b>054793</b>
<b>0.32</b>	30m	0.25µm	370/380	<b>054798</b>
	60m	0.25µm	370/380	<b>054794</b>

## BPX1

- 100% Dimethyl polysiloxane
- Applications: ASTM method D2887 and D6532

### Polyimide Clad Column

ID(mm)	Length	Film	Iso/Prog	Cat. No.
<b>0.10</b>	10m	0.10µm	400	<b>054777</b>
<b>0.53</b>	6m	2.65µm	370	<b>0548025</b>
	10m	0.10µm	400	<b>054803</b>
	10m	0.90µm	400	<b>054801</b>
	10m	2.65µm	370	<b>054802</b>

### Aluminum Clad Column

<b>0.53</b>	5m	0.17µm	430	<b>054782</b>
	5m	0.10µm	430	<b>054800</b>
	10m	0.10µm	430	<b>054779</b>

## BP1-PONA

- 100% Dimethyl polysiloxane
- Designed for the analysis of petroleum products

ID(mm)	Length	Film	Iso/Prog	Cat. No.
<b>0.15</b>	50m	0.50µm	280/300	<b>054950</b>
<b>0.25</b>	100m	0.50µm	280/300	<b>054818</b>

## BP5

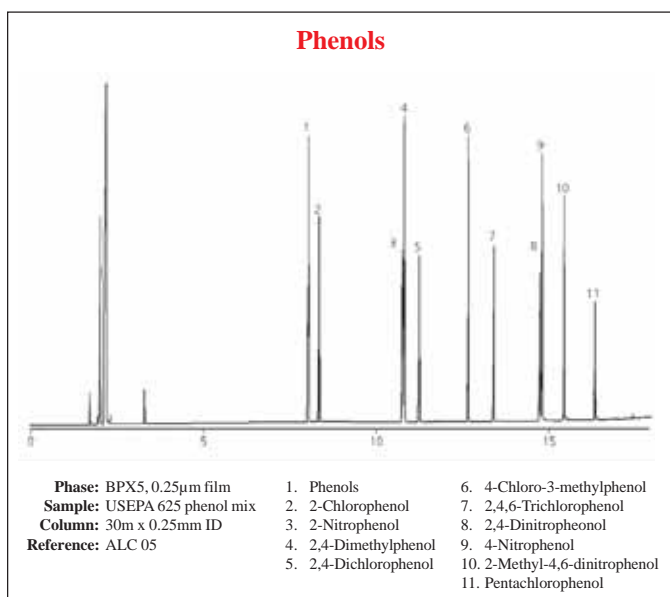
- 5% Phenyl methylpolysiloxane

ID(mm)	Length	Film	Iso/Prog	Cat. No.	
<b>0.22</b>	12m	0.25µm	340/350	<b>054167</b>	
	25m	0.25µm	340/350	<b>054168</b>	
	30m	0.25µm	340/350	<b>054171</b>	
	50m	0.25µm	340/350	<b>054169</b>	
	50m	1.00µm	340/350	<b>054175</b>	
<b>0.25</b>	15m	0.25µm	340/350	<b>054182</b>	
	30m	0.25µm	340/350	<b>054183</b>	
	30m	1.00µm	340/350	<b>054203</b>	
	60m	0.25µm	340/350	<b>054184</b>	
	60m	1.00µm	340/350	<b>054215</b>	
<b>0.32</b>	12m	0.25µm	340/350	<b>054179</b>	
	15m	0.25µm	340/350	<b>054176</b>	
	25m	0.25µm	340/350	<b>054180</b>	
	25m	0.50µm	340/350	<b>054186</b>	
	25m	1.00µm	340/350	<b>054192</b>	
	30m	0.25µm	340/350	<b>054177</b>	
	30m	0.50µm	340/350	<b>054216</b>	
	30m	1.00µm	340/350	<b>054189</b>	
	50m	0.50µm	340/350	<b>054187</b>	
	50m	1.00µm	340/350	<b>054193</b>	
	60m	0.25µm	340/350	<b>054178</b>	
	60m	1.00µm	340/350	<b>054188</b>	
	<b>0.53</b>	12m	1.00µm	340/350	<b>054197</b>
		15m	1.00µm	340/350	<b>054194</b>
		15m	1.50µm	280/300	<b>054199</b>
25m		1.00µm	340/350	<b>054198</b>	
30m		0.50µm	340/350	<b>0541935</b>	
30m		1.00µm	340/350	<b>054195</b>	
30m		5.00µm	280/300	<b>054196</b>	
60m	1.50µm	340/350	<b>054204</b>		

## BPX5

- 5% Phenyl polysilphenylene-siloxane
- Ultra low bleed

ID(mm)	Length	Film	Iso/Prog	Cat. No.	
<b>0.10</b>	10m	0.10µm	360/370	<b>054099</b>	
	<b>0.15</b>	10m	1.20µm	<b>054106</b>	
<b>0.15</b>	12m	0.25µm	360/370	<b>054103</b>	
	12m	0.40µm	360/370	<b>054107</b>	
	25m	0.25µm	360/370	<b>054104</b>	
	25m	0.40µm	360/370	<b>054108</b>	
	30m	0.15µm	360/370	<b>054110</b>	
	50m	0.25µm	360/370	<b>054105</b>	
	<b>0.22</b>	12m	0.25µm	360/370	<b>054112</b>
		25m	0.25µm	360/370	<b>054113</b>
		25m	1.00µm	360/370	<b>054116</b>
		30m	0.25µm	360/370	<b>054142</b>
50m		0.25µm	360/370	<b>054114</b>	
<b>0.25</b>	50m	1.00µm	360/370	<b>054117</b>	
	15m	0.25µm	360/370	<b>054100</b>	
	15m	1.00µm	360/370	<b>054121</b>	
	30m	0.25µm	360/370	<b>054101</b>	
	30m	0.50µm	360/370	<b>0541025</b>	
	30m	1.00µm	360/370	<b>054122</b>	
	60m	0.25µm	360/370	<b>054102</b>	
	60m	1.00µm	360/370	<b>054123</b>	
	<b>0.32</b>	6m	1.00µm	360/370	<b>0541261</b>
		12m	0.25µm	360/370	<b>054118</b>
12m		0.50µm	360/370	<b>054124</b>	
12m		1.00µm	360/370	<b>054127</b>	
15m		0.25µm	360/370	<b>054144</b>	
15m		1.00µm	360/370	<b>054152</b>	
25m		0.25µm	360/370	<b>054119</b>	
25m		0.35µm	360/370	<b>054125</b>	
25m		1.00µm	360/370	<b>054128</b>	
25m		3.00µm	350/360	<b>054136</b>	
30m		0.25µm	360/370	<b>054145</b>	
30m		0.50µm	360/370	<b>0541205</b>	
30m		1.00µm	360/370	<b>054153</b>	
50m		0.25µm	360/370	<b>054120</b>	
50m		0.50µm	360/370	<b>054126</b>	
50m	1.00µm	360/370	<b>054129</b>		
60m	0.25µm	360/370	<b>054146</b>		
60m	1.00µm	360/370	<b>054154</b>		
<b>0.53</b>	12m	0.25µm	360/370	<b>054133</b>	
	12m	1.00µm	360/370	<b>054130</b>	
	12m	3.00µm	350/360	<b>054138</b>	
	15m	0.50µm	360/370	<b>0541344</b>	
	15m	1.00µm	360/370	<b>054147</b>	
	15m	1.50µm	350/360	<b>0541347</b>	
	15m	3.00µm	350/360	<b>054159</b>	
	25m	0.25µm	360/370	<b>054134</b>	
	25m	1.00µm	360/370	<b>054131</b>	
	25m	3.00µm	350/360	<b>054139</b>	
	30m	0.50µm	360/370	<b>0541345</b>	
	30m	1.00µm	360/370	<b>054148</b>	
	30m	1.50µm	350/360	<b>0541348</b>	
	30m	3.00µm	350/360	<b>054160</b>	
	50m	1.00µm	360/370	<b>054132</b>	
60m	1.00µm	360/370	<b>054158</b>		



# SGE GC Capillary Columns

## HT5

- 5% Phenyl polycarborane-siloxane
- Ultra high temperature
- Ideal for simulated distillation applications

ID(mm)	Length	Film	Iso/Prog	Cat. No.
<b>0.22</b>	12m	0.10µm	380/400	<b>054631</b>
	25m	0.10µm	380/400	<b>054632</b>
<b>0.25</b>	15m	0.10µm	380/400	<b>054633</b>
	30m	0.25µm	380/400	<b>054634</b>
<b>0.32</b>	12m	0.10µm	380/400	<b>054641</b>
	15m	0.50µm	380/400	<b>054667</b>
	25m	0.10µm	380/400	<b>054642</b>
	30m	0.50µm	380/400	<b>054668</b>
<b>0.53</b>	6m	0.10µm	380/400	<b>054655</b>
	12m	0.15µm	380/400	<b>054657</b>
	15m	0.50µm	380/400	<b>054671</b>
	25m	0.15µm	380/400	<b>054658</b>
	30m	0.50µm	380/400	<b>054672</b>

### Aluminum Clad Columns

<b>0.22</b>	12m	0.10µm	380/400	<b>054635</b>
	25m	0.10µm	380/400	<b>054636</b>
<b>0.32</b>	12m	0.10µm	380/400	<b>054651</b>
	25m	0.10µm	380/400	<b>054652</b>
	50m	0.10µm	380/400	<b>054653</b>
<b>0.53</b>	5m	0.10µm	380/400	<b>054673</b>
	6m	0.10µm	380/400	<b>054661</b>
	12m	0.15µm	380/400	<b>054662</b>
	25m	0.15µm	380/400	<b>054665</b>

## HT8

- 8% Phenyl polycarborane-siloxane
- Preferred column for polychlorinated biphenyl compounds (PCBs)
- Separates PCBs on ortho ring substitution as well as boiling point

ID(mm)	Length	Film	Iso/Prog	Cat. No.
<b>0.10</b>	10m	0.10µm	360/370	<b>054690</b>
<b>0.22</b>	12m	0.25µm	360/370	<b>054674</b>
	25m	0.25µm	360/370	<b>054675</b>
	50m	0.25µm	360/370	<b>054676</b>
<b>0.25</b>	25m	0.25µm	360/370	<b>054677</b>
<b>0.32</b>	12m	0.25µm	360/370	<b>054679</b>
	25m	0.25µm	360/370	<b>054680</b>
	50m	0.25µm	360/370	<b>054681</b>
	60m	0.25µm	360/370	<b>054682</b>
<b>0.53</b>	12m	0.50µm	360/370	<b>054684</b>
	25m	0.50µm	360/370	<b>054685</b>

## BPX608

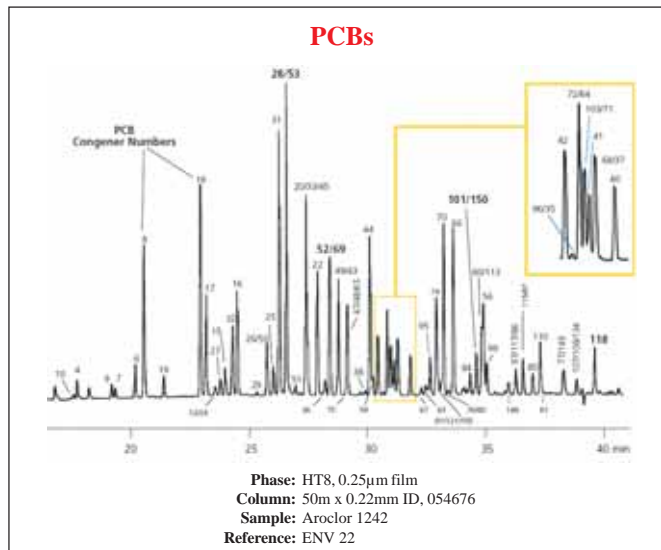
- 35% Phenyl polysilphenylene-siloxane
- Optimized for ECD
- Ideal for organochlorine, pesticides, and herbicide analysis

ID(mm)	Length	Film	Iso/Prog	Cat. No.
<b>0.32</b>	25m	0.40µm	360/370	<b>054823</b>

## BPX35

- 35% Phenyl polysilphenylene-siloxane
- Equivalent to USP Phase G42

ID(mm)	Length	Film	Iso/Prog	Cat. No.	
<b>0.10</b>	10m	0.10µm	360/370	<b>054699</b>	
<b>0.22</b>	25m	0.25µm	360/370	<b>054711</b>	
	30m	0.25µm	360/370	<b>054714</b>	
	50m	0.25µm	360/370	<b>054712</b>	
<b>0.25</b>	15m	0.25µm	360/370	<b>054700</b>	
	15m	1.00µm	360/370	<b>054703</b>	
	30m	0.25µm	360/370	<b>054701</b>	
	30m	0.50µm	360/370	<b>0547025</b>	
	30m	1.00µm	360/370	<b>054704</b>	
	60m	0.25µm	360/370	<b>054702</b>	
	60m	1.00µm	360/370	<b>054705</b>	
	<b>0.32</b>	15m	0.25µm	360/370	<b>054723</b>
		15m	0.50µm	360/370	<b>054718</b>
		15m	1.00µm	360/370	<b>054716</b>
25m		0.25µm	360/370	<b>054721</b>	
30m		0.25µm	360/370	<b>054724</b>	
30m		0.50µm	360/370	<b>0547158</b>	
30m		1.00µm	360/370	<b>054717</b>	
50m		0.25µm	360/370	<b>054722</b>	
60m		0.25µm	360/370	<b>054725</b>	
<b>0.53</b>		15m	0.50µm	360/370	<b>054734</b>
	15m	1.00µm	360/370	<b>054736</b>	
	30m	0.50µm	360/370	<b>054735</b>	
	30m	1.00µm	360/370	<b>054737</b>	



## BPX50

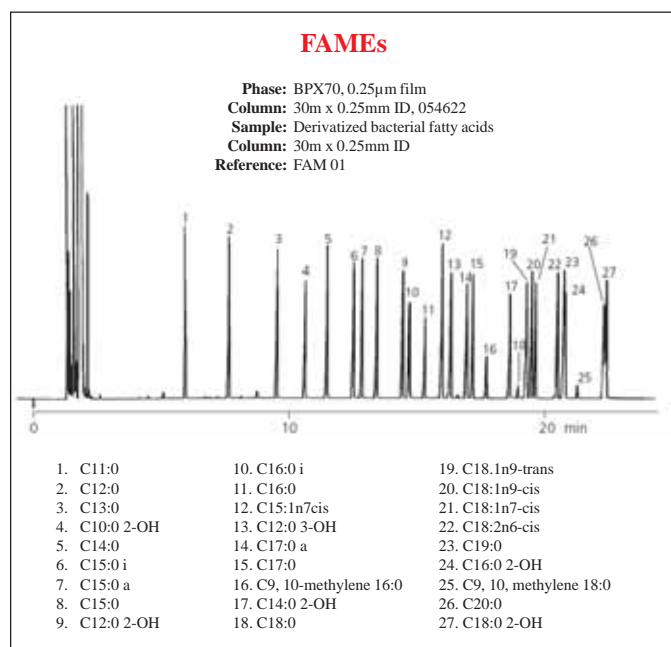
- 50% Phenyl polysilphenylene-siloxane
- Ultra low bleed
- Ideal for EPA methods 604, 608, 8060, 8081, triazines/ herbicides, drug screening, steroids and a variety of pharmaceutical applications

ID(mm)	Length	Film	Iso/Prog	Cat. No.
<b>0.10</b>	10m	0.10µm	360/370	<b>054740</b>
<b>0.15</b>	30m	0.15µm	360/370	<b>054741</b>
<b>0.25</b>	15m	0.25µm	360/370	<b>054750</b>
	30m	0.25µm	360/370	<b>054751</b>
	60m	0.25µm	360/370	<b>054752</b>
<b>0.32</b>	15m	0.25µm	360/370	<b>054760</b>
	30m	0.25µm	360/370	<b>054761</b>
	60m	0.25µm	360/370	<b>054762</b>
<b>0.53</b>	15m	0.50µm	360/370	<b>054770</b>
	30m	0.50µm	360/370	<b>054771</b>
	30m	1.00µm	360/370	<b>054772</b>

## BPX70

- 70% Cyanopropyl polysilphenylene-siloxane
- Custom designed for separation of Fatty Acid Methyl Esters (FAMES)
- Ideal for cis/trans isomer separation

ID(mm)	Length	Film	Iso/Prog	Cat. No.
<b>0.10</b>	10m	0.20µm	250/260	<b>054600</b>
<b>0.22</b>	12m	0.25µm	250/260	<b>054601</b>
	25m	0.25µm	250/260	<b>054602</b>
	30m	0.25µm	250/260	<b>054612</b>
	50m	0.25µm	250/260	<b>054603</b>
	60m	0.25µm	250/260	<b>054613</b>



## BPX70 Continued

ID(mm)	Length	Film	Iso/Prog	Cat. No.
<b>0.25</b>	15m	0.25µm	250/260	<b>054621</b>
	30m	0.25µm	250/260	<b>054622</b>
	60m	0.25µm	250/260	<b>054623</b>
	125m	0.25µm	250/260	<b>054624</b>
<b>0.32</b>	12m	0.25µm	250/260	<b>054605</b>
	25m	0.25µm	250/260	<b>054606</b>
	30m	0.25µm	250/260	<b>054616</b>
	50m	0.25µm	250/260	<b>054607</b>
<b>0.53</b>	60m	0.25µm	250/260	<b>054617</b>
	15m	0.50µm	250/260	<b>054619</b>
	25m	0.50µm	250/260	<b>054610</b>
	30m	0.50µm	250/260	<b>054620</b>

## BP20 (WAX)

- Polyethylene glycol (PEG)
- Ideal for alcohol, ester and aldehyde analysis
- Cross-linked for stability and washing

ID(mm)	Length	Film	Iso/Prog	Cat. No.
<b>0.22</b>	12m	0.25µm	260/280	<b>054420</b>
	25m	0.25µm	260/280	<b>054421</b>
	30m	0.25µm	260/280	<b>054424</b>
	50m	0.25µm	260/280	<b>054422</b>
	60m	0.25µm	260/280	<b>054425</b>
<b>0.25</b>	15m	0.25µm	260/280	<b>054426</b>
	30m	0.25µm	260/280	<b>054427</b>
	30m	0.50µm	260/280	<b>054415</b>
	30m	1.0µm	260/280	<b>054439</b>
	60m	0.25µm	260/280	<b>054428</b>
	60m	0.50µm	260/280	<b>054458</b>
<b>0.32</b>	15m	0.25µm	260/280	<b>054432</b>
	25m	0.25µm	260/280	<b>054430</b>
	25m	0.50µm	260/280	<b>054436</b>
	25m	1.00µm	260/280	<b>054442</b>
	30m	0.25µm	260/280	<b>054433</b>
	30m	0.50µm	260/280	<b>054438</b>
	30m	1.00µm	260/280	<b>054444</b>
	50m	0.25µm	260/280	<b>054431</b>
	50m	0.50µm	260/280	<b>054437</b>
	50m	1.00µm	260/280	<b>054443</b>
	60m	0.25µm	260/280	<b>054434</b>
60m	0.50µm	260/280	<b>054457</b>	
60m	1.00µm	260/280	<b>054445</b>	
<b>0.53</b>	12m	1.00µm	260/280	<b>054447</b>
	12m	2.00µm	240/260	<b>054455</b>
	15m	1.00µm	260/280	<b>054450</b>
	25m	1.00µm	260/280	<b>054448</b>
	25m	2.00µm	240/260	<b>054456</b>
	30m	0.50µm	260/280	<b>054440</b>
30m	1.00µm	260/280	<b>054451</b>	
60m	1.00µm	260/280	<b>0544515</b>	

# SGE GC Capillary Columns



## SolGel-WAX™

- Polyethylene Glycol (PEG)
- Ideal for alcohol, ester and aldehyde analysis

ID(mm)	Length	Film	Iso/Prog	Cat. No.
0.25	30m	0.25µm	280/300	054796
	30m	1.00µm	280/300	054787
	60m	0.25µm	280/300	054791
0.32	30m	0.25µm	280/300	054788
	30m	0.50µm	280/300	054797
	60m	0.25µm	280/300	054789
0.53	60m	0.50µm	280/300	054792
	30m	0.50µm	280/300	054786
	30m	1.00µm	280/300	054785

## BP21 (FFAP)

- Nitroterephthalic acid modified PEG
- Ideal for low molecular weight acids

ID(mm)	Length	Film	Iso/Prog	Cat. No.
0.22	25m	0.25µm	240/250	054462
	50m	0.25µm	240/250	054463
0.25	15m	0.25µm	240/250	054464
	30m	0.25µm	240/250	054465
	60m	0.25µm	240/250	054466
0.32	12m	0.25µm	240/250	054467
	15m	0.25µm	240/250	054470
	25m	0.25µm	240/250	054468
	30m	0.25µm	240/250	054471
	50m	0.25µm	240/250	054469
	60m	0.25µm	240/250	054472
0.53	12m	0.50µm	240/250	054473
	15m	0.50µm	240/250	054476
	25m	0.50µm	240/250	054474
	25m	0.50µm	240/250	054477
	30m	1.00µm	240/250	054478

## BP10 (1701)

- 14% Cyanopropylphenyl polysiloxane
- Application areas: Pesticides, herbicides, environmental (USEPA 608, 8081) and drugs

ID(mm)	Length	Film	Iso/Prog	Cat. No.
0.22	12m	0.25µm	280/300	054252
	25m	0.25µm	280/300	054253
	50m	0.25µm	280/300	054254

## BP10 (1701) Continued

ID(mm)	Length	Film	Iso/Prog	Cat. No.
0.25	15m	0.25µm	280/300	054255
	30m	0.25µm	280/300	054256
	30m	1.00µm	280/300	054271
	60m	0.25µm	280/300	054257
0.32	15m	0.25µm	280/300	054258
	15m	1.00µm	280/300	054264
	25m	0.25µm	280/300	054262
	25m	0.5µm	280/300	054268
	30m	0.25µm	280/300	054259
	30m	0.50µm	280/300	054265
	30m	1.00µm	280/300	054270
	50m	0.50µm	280/300	054269
	60m	0.25µm	280/300	054260
	60m	1.00µm	280/300	054266
0.53	15m	1.00µm	280/300	054282
	25m	1.00µm	280/300	054280
	30m	1.00µm	280/300	054283

## BP225

- 50% Cyanopropylphenyl polysiloxane

ID(mm)	Length	Film	Iso/Prog	Cat. No.
0.22	25m	0.25µm	230/260	054352
	50m	0.25µm	230/260	054353
0.32	25m	0.25µm	230/260	054358
0.53	25m	0.50µm	230/260	054364

## BPX-Volatiles

- Polysilphenylenesiloxane based phase
- Optimized for US EPA 624 method
- Ideal for USP G43 method
- Designed for volatiles analysis

ID(mm)	Length	Film	Iso/Prog	Cat. No.
0.25	30m	1.4µm	280/300	054980
	60m	1.4µm	280/300	054981
0.32	30m	1.8µm	280/300	054982
	60m	1.8µm	280/300	054983
0.53	30m	3.0µm	280/300	054984
	60m	3.0µm	280/300	054985

## CYDEX-B

- Permethylated beta cyclodextrin
- Separation of chiral compounds

ID	Length	Film	Iso/Prog	Cat. No.
0.22	25m	0.25µm	220/240	054900
	50m	0.25µm	220/240	054901
0.32	25m	0.25µm	220/240	054902