

SRI Gas Chromatographs

Model 8610C Chassis

Certification Quality Gas Chromatograph for Laboratory or Field Use
Fully-electronic, digital EPC gas chromatograph configurable for any ASTM or EPA analysis

Every Model 8610C SRI GC Includes:

- Single on-column injector for 0.53mm capillary and 1/8" packed columns
- Electronic pressure control for all gases
- Temperature programmable oven, up to 400° C
- PeakSimple data system
- Operators manual
- Accessory kit
- Heavy duty re-useable shipping container
- 2 year warranty!

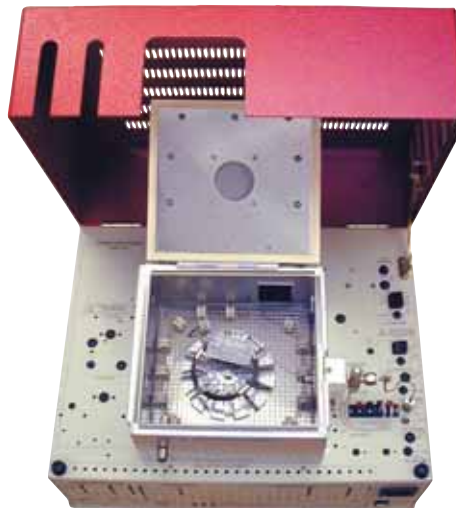


Model 8610C Chassis, Step 1: Choose One

Cat. No.	Description
8610-1003	GC with 1 channel PeakSimple
8610-4003	GC with 4 channel PeakSimple
8610-6003	GC with 6 channel USB PeakSimple

Standard equipment:

Model 8610C chassis; ambient to 400° C column oven; On-Column injector with carrier EPC; PeakSimple data system; operators manual; accessory kit; heavy duty re-useable shipping container. To completely configure a Model 8610C GC, most users will need to specify one or more detectors, injectors, and columns.



Detector Options, Step 2: Choose up to 4 per GC

Each detector is equipped with a thermostatted heater block for temperature stability, electronic pressure controlled (EPC) support gases, such as hydrogen and air for the FID, and internal amplifier electronics. All detectors require factory installation.

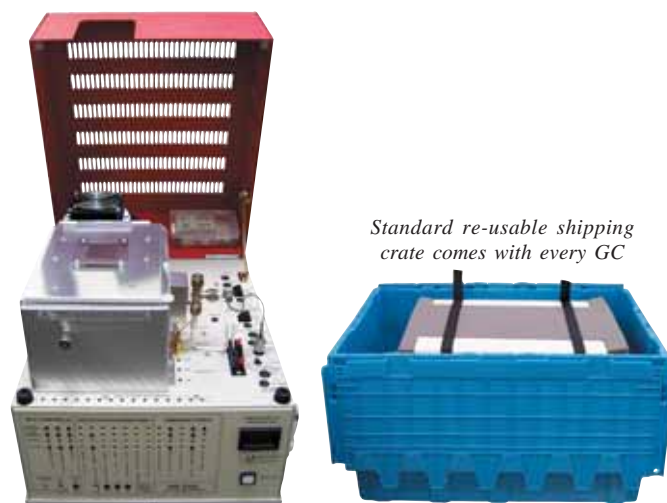
Detector	Sensitivity	Selectivity	Cat. No
CCD	500ppm	hydrogen and hydrocarbons	8690-2007
TCD	200-500ppm	universal	8690-0007
FID	1ppm	hydrocarbons	8690-0010
DELCD	10ppb	chlorinated and brominated molecules	8690-1026
FID/DELCD	10ppm	hydrocarbons, chlorinated and brominated molecules	8690-2026
HID	10ppm	universal, except neon	8690-0030
PID	10ppb	aromatics and molecules with double carbon bonds	8690-0040
NPD	10ppm	nitrogen and phosphorus	8690-0015
NPD/DELCD	100ppb	nitrogen, phosphorus, chlorinated and brominated molecules	8690-2615
TID	1ppb, 50ppb	nitro functional groups (TNT, etc.)	8690-0017
ECD	10ppb	electronegative compounds	8690-0020
RGD	10ppb	reducing gases (like H ₂ and CO)	8690-0009
FPD	200ppb, 10ppb	sulfur and phosphorus	8690-0080
FPD/FID	200ppb, 10ppb, 100ppm	sulfur, phosphorus, and hydrocarbons	8690-1080
Dual FPD	200ppb, 10ppb	sulfur and phosphorus simultaneously	8690-0085
FID Dual FPD	100ppm, 200ppb, 10ppb	hydrocarbons, sulfur and phosphorus simultaneously	8690-2085

SRI Gas Chromatographs Model 8610C Chassis and Preconfigured Educational GC's

Injector Options, Step 3: Choose up to 5 per GC

The On-Column injector is standard equipment on every 8610C SRI GC. Heated Flash Vaporization, Heated Split/Splitless, and PTV injectors are upgrades to the On-Column injector. All injectors must be installed at the factory.

Cat. No.	Description
8690-0023	On-Column injector (.53mm and 1/8")
8690-0025	Heated flash vaporization injector upgrade
8690-0034	Heated split/splitless injector upgrade
8690-0045	Heated static headspace injector
8690-1088	Thermal soil desorber
8690-0063	10 Port gas sampling valve (manual)
8690-0065	10 Port gas sampling valve (electric)
8690-0088	Thermostatted valve oven
8690-0084	Heated/fast cooling adsorbent trap
8690-0051	Method 5030 style purge and trap
8690-0052	Method 5035 compliant purge and trap
8680-0052	Method 5035 VOA vial sparger
8690-1051	Method TO-14 air concentrator



Standard re-usable shipping crate comes with every GC

Educational GC System

- TCD or FID detector
- Single channel PeakSimple data system
- 1-meter Silica Gel column
- ... on the ultra compact 310 chassis

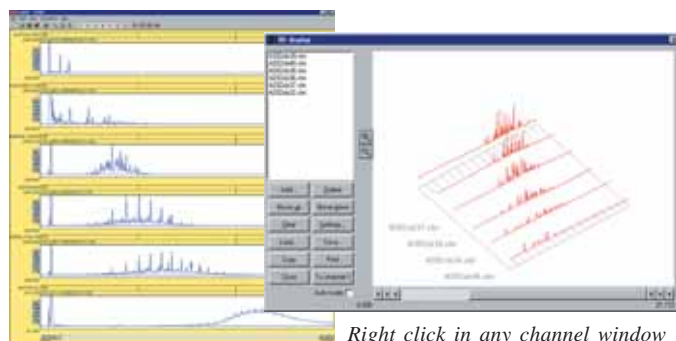
The Educational GC is ideal for the undergraduate chemistry classes where the principles of gas chromatography are demonstrated, or for graduate level research. Because of their low cost and upgrade-ability* with other SRI detectors and injectors, these GCs are also widely used by thrifty labs for simple applications such as general organics analysis, landfill gas analysis, stack monitoring, and quality control.

The on-column injector is ideal for 1/8" packed or 0.53mm wide-bore capillary columns. The column oven accepts column cage diameters up to 4 inches, is temperature programmable to 400° C, and comes with fast cool-down fans. Electronic Pressure Control (EPC) for the carrier gas provides rock-solid retention time reproducibility.

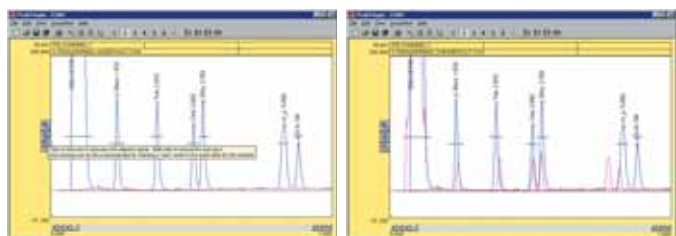
The built-in single channel PeakSimple data system provides powerful yet easy data acquisition and temperature programming for the column oven.

Cat. No.	Description
0310-1000	Educational TCD on 310° chassis
0310-0004	Educational FID on 310° chassis

*Educational models are less expensive than equivalent GCs manufactured "a la carte" because of batch manufacturing efficiencies. No customization of educational models is available prior to initial sale, although normal factory retrofit services are available after delivery.



Right click in any channel window to loads its 3D display



PeakSimple Data System

A single channel data system is standard equipment in a SRI GC. If you'll be ordering more than one detector on your GC, you will need a four or six channel data system. The one and four channel data system connect to your computer's serial port, while the six channel model connects to the USB port.

Cat. No.	Description
8600-1055	PeakSimple single channel data system
8600-4055	PeakSimple 4 channel data system
8600-6055	PeakSimple 6 channel USB data system